

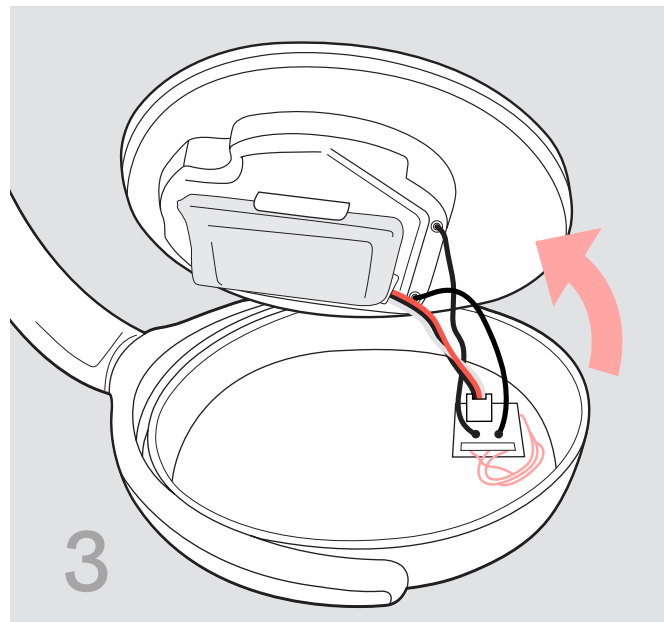
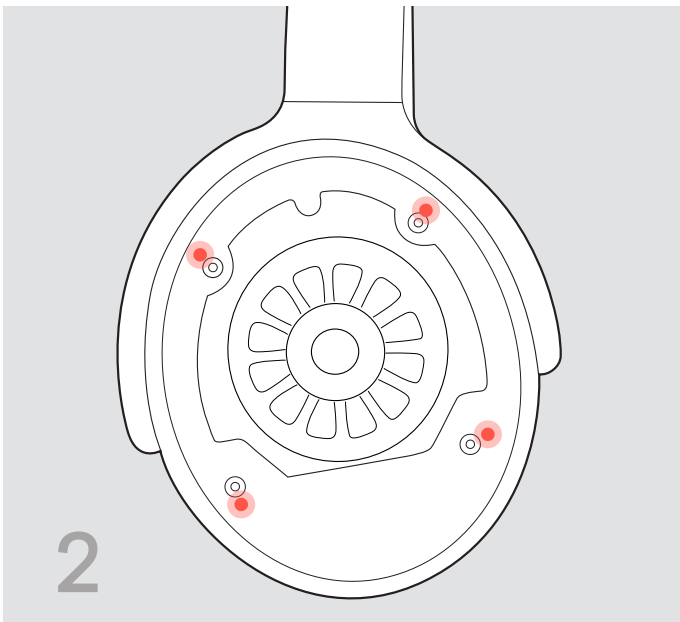
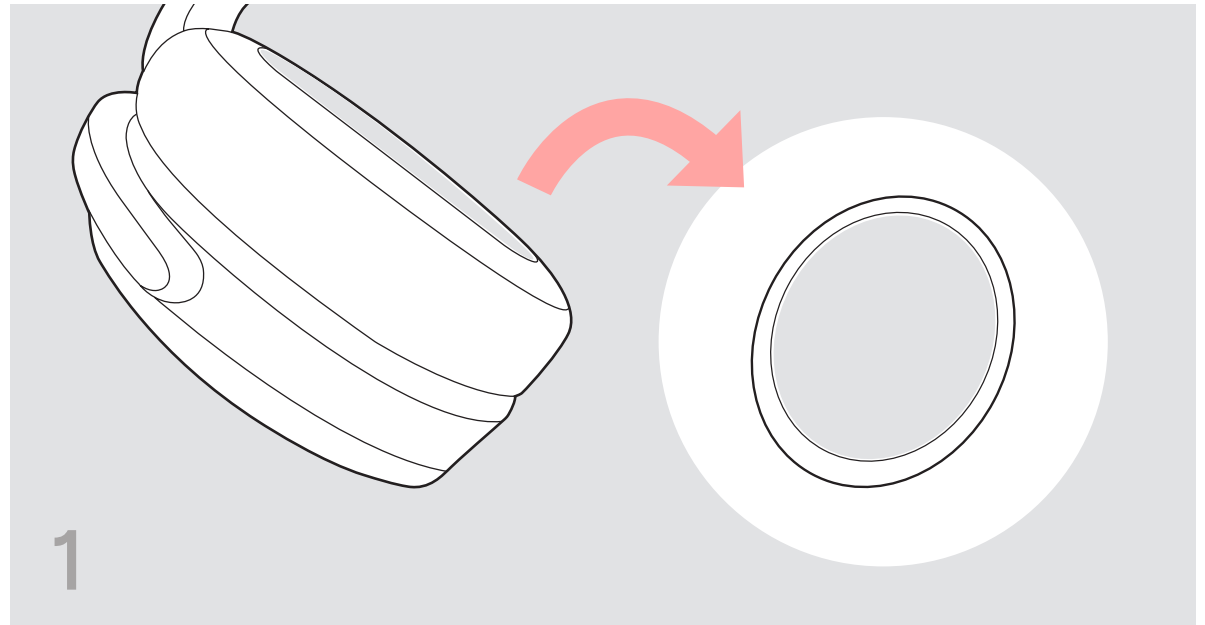
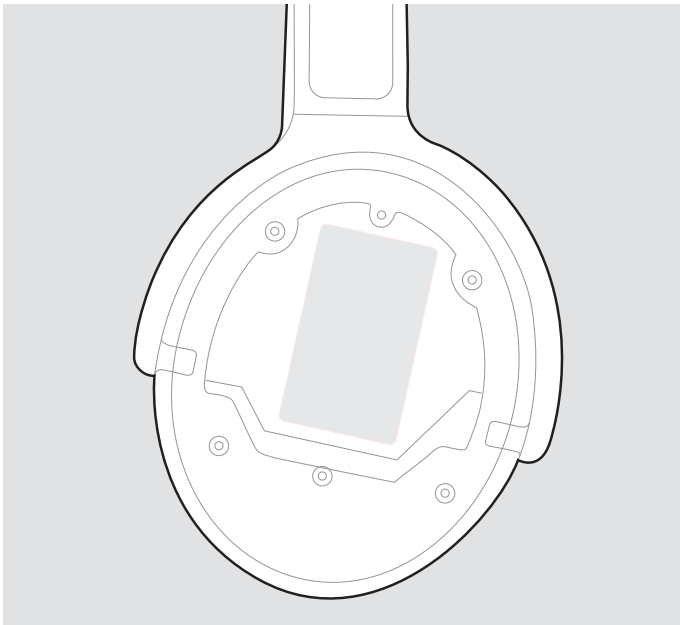
EPSON

ADAPT 360

Battery Replacement Guide

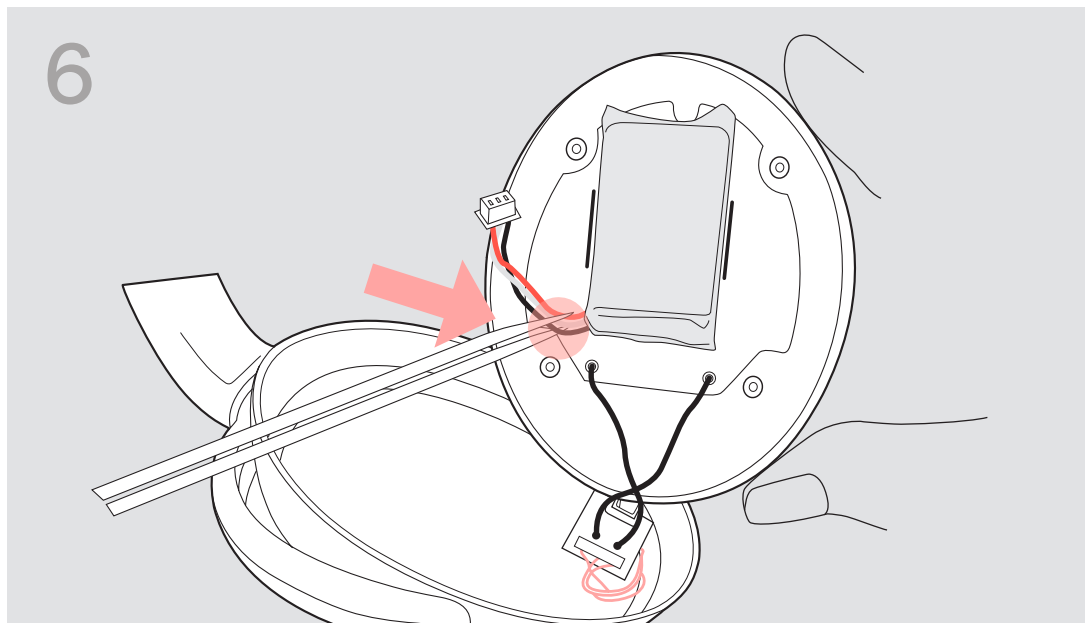
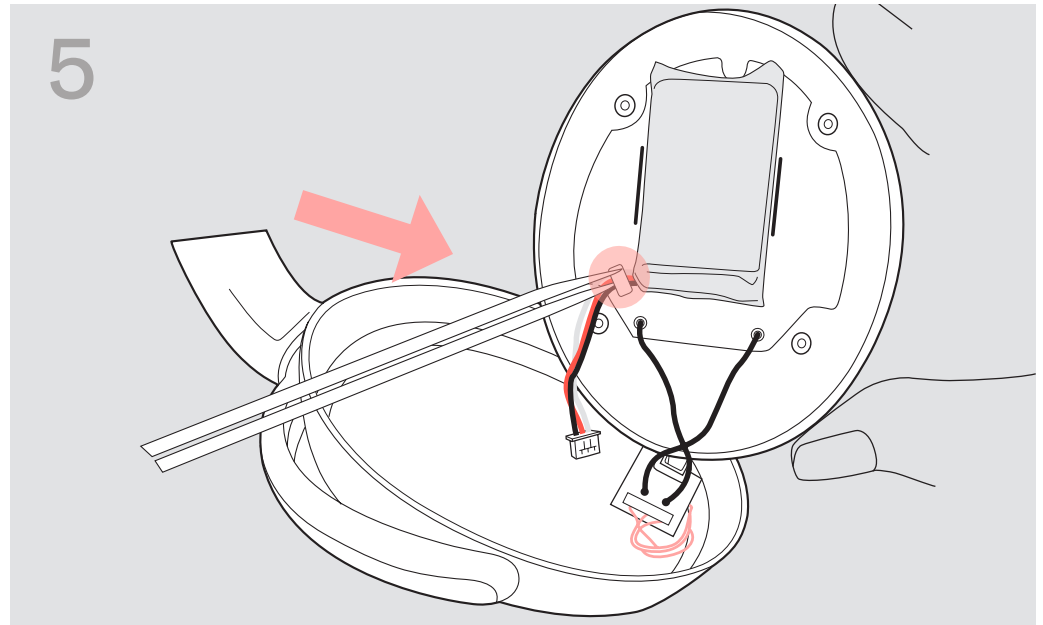
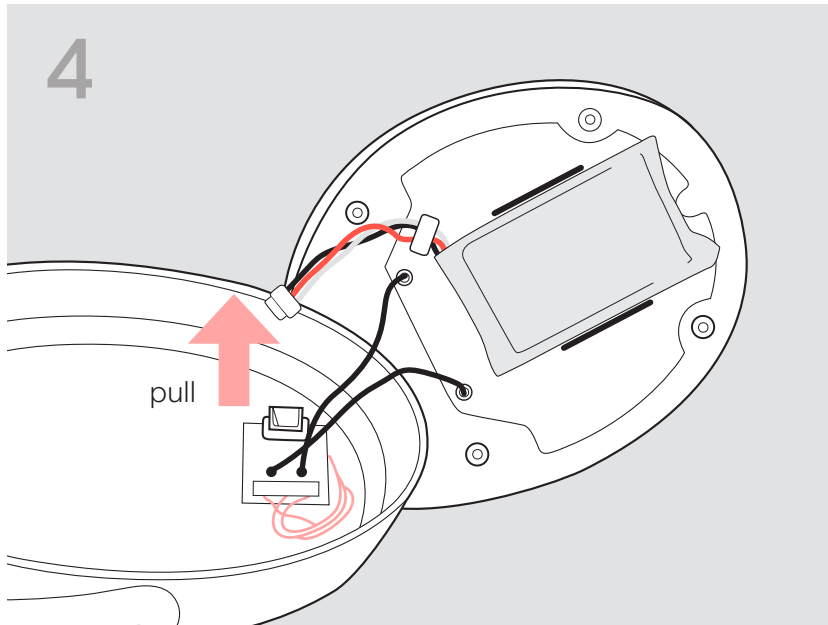


Battery Replacement Guide



1. Take off ear-pad
2. Screw all 4 screw out and baffle plate can be disassembled from cup. Be aware that cables don't being stressed
3. Disassembled baffle plate from cup. Be aware that cables don't being stressed

Battery Replacement Guide

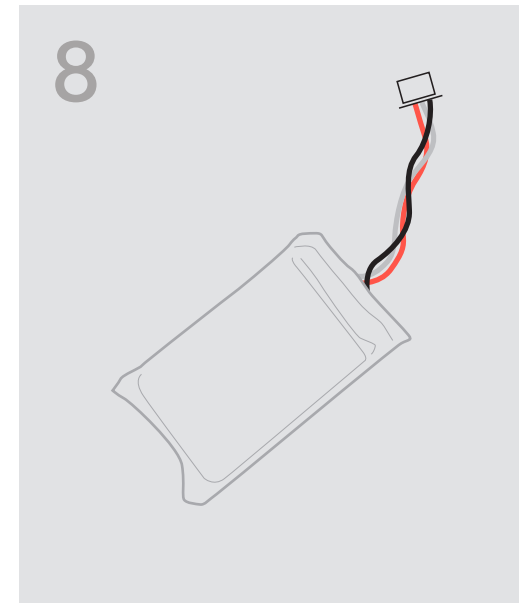
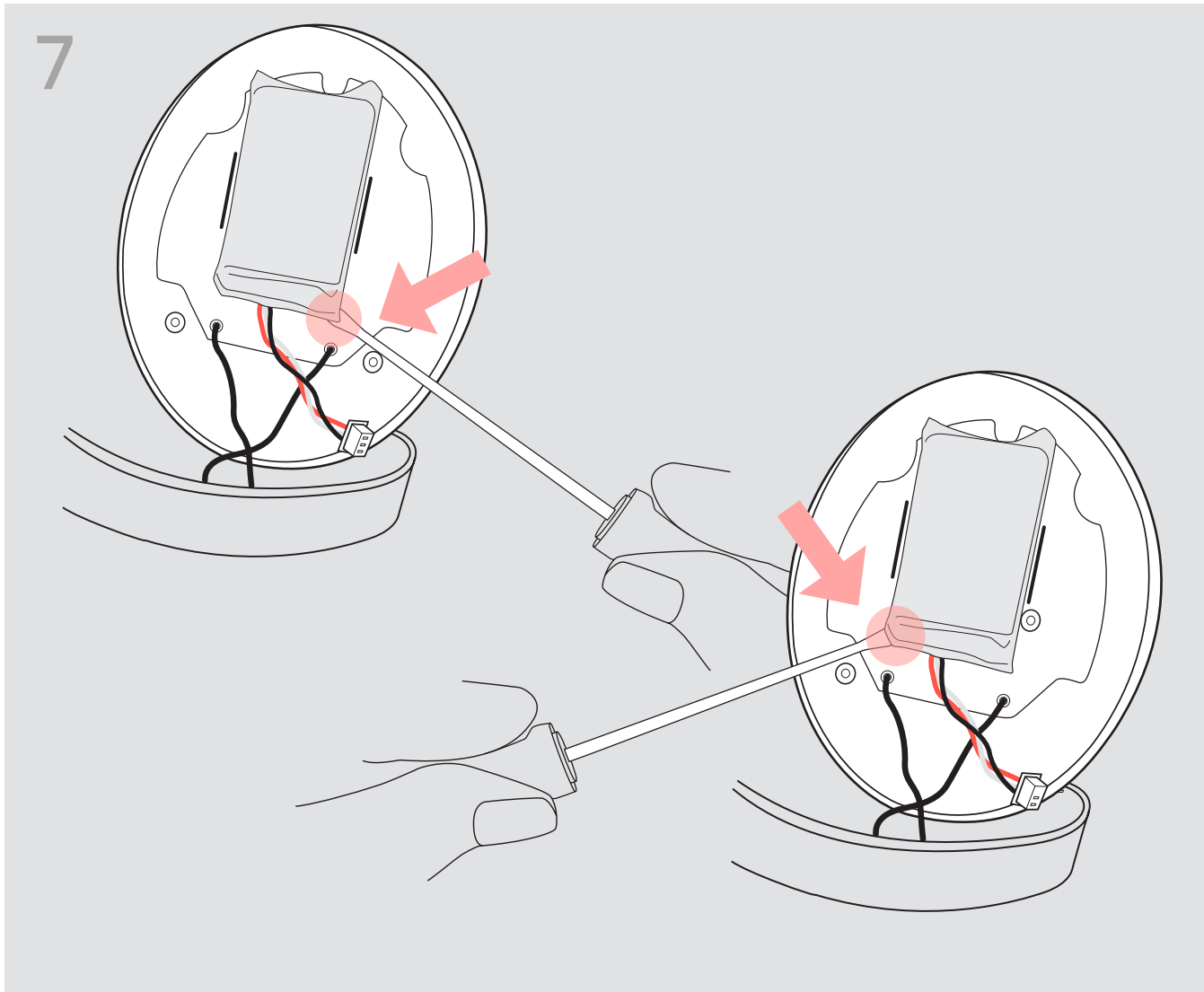


4. Unplug battery-connector by pull as shown at picture

5. Disassembled the EVA and glue from cable

6. Disassembled the cable from speaker back cover

Battery Replacement Guide



7. Use small screwdriver at the two battery corners to release battery from the cup

8. Recommend that new battery has pre-attached sheet