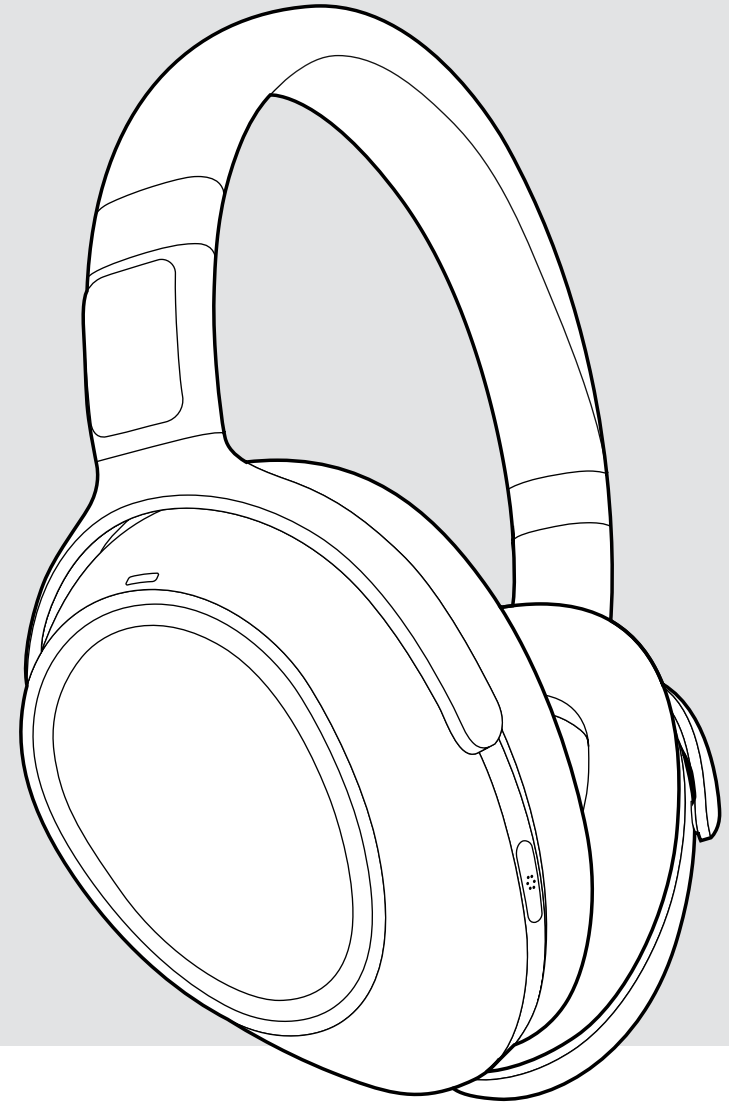


EPOS

ADAPT 600 Series

Battery Removal Guide



DSEA A/S

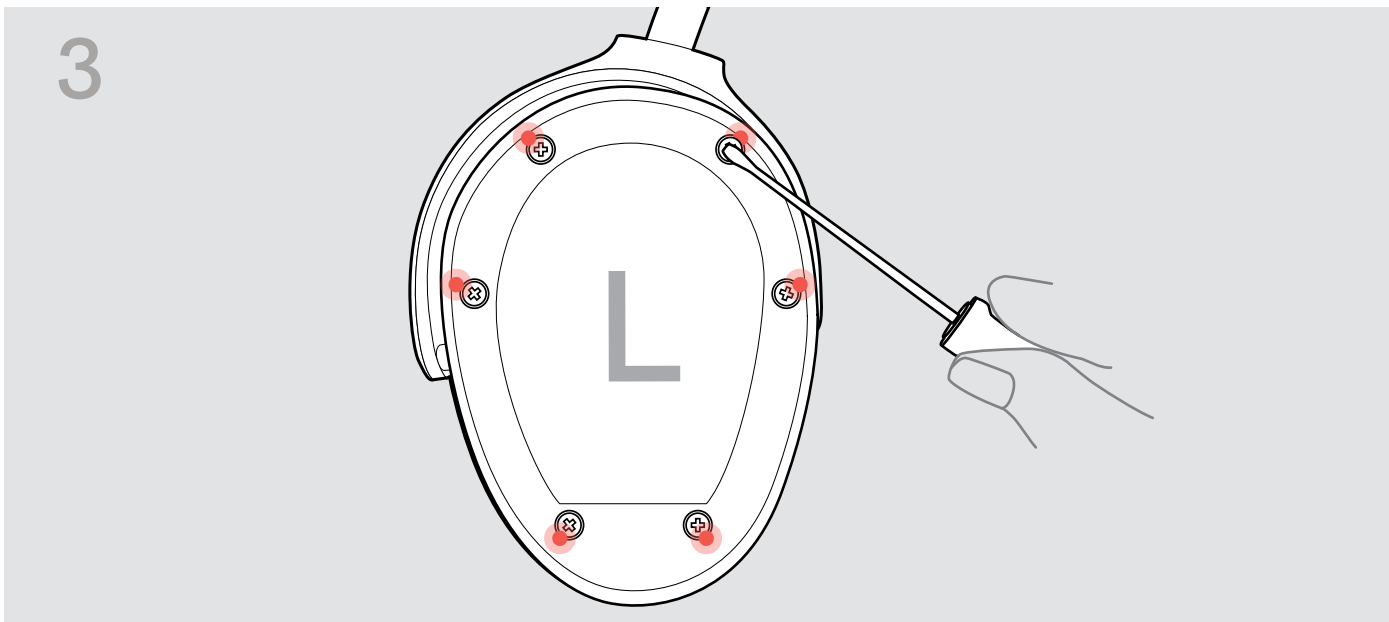
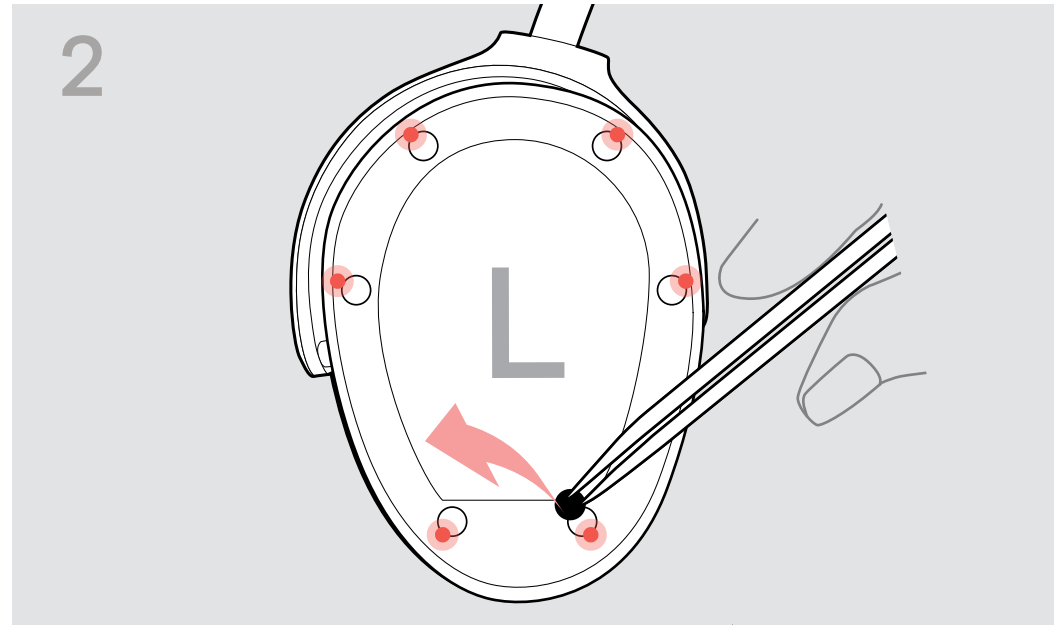
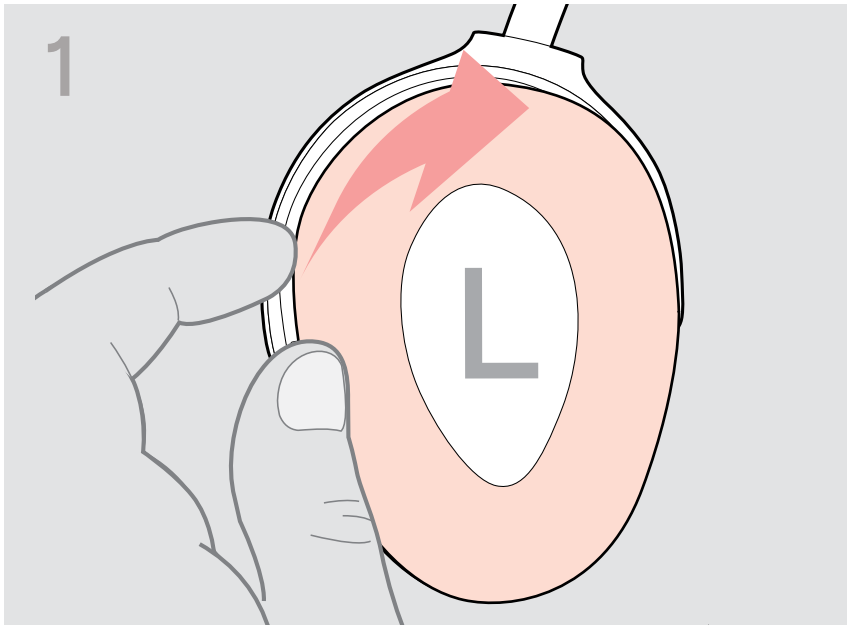
Kongebakken 9, DK-2765 Smørum, Denmark

www.eposaudio.com

Publ. 04/22, A02

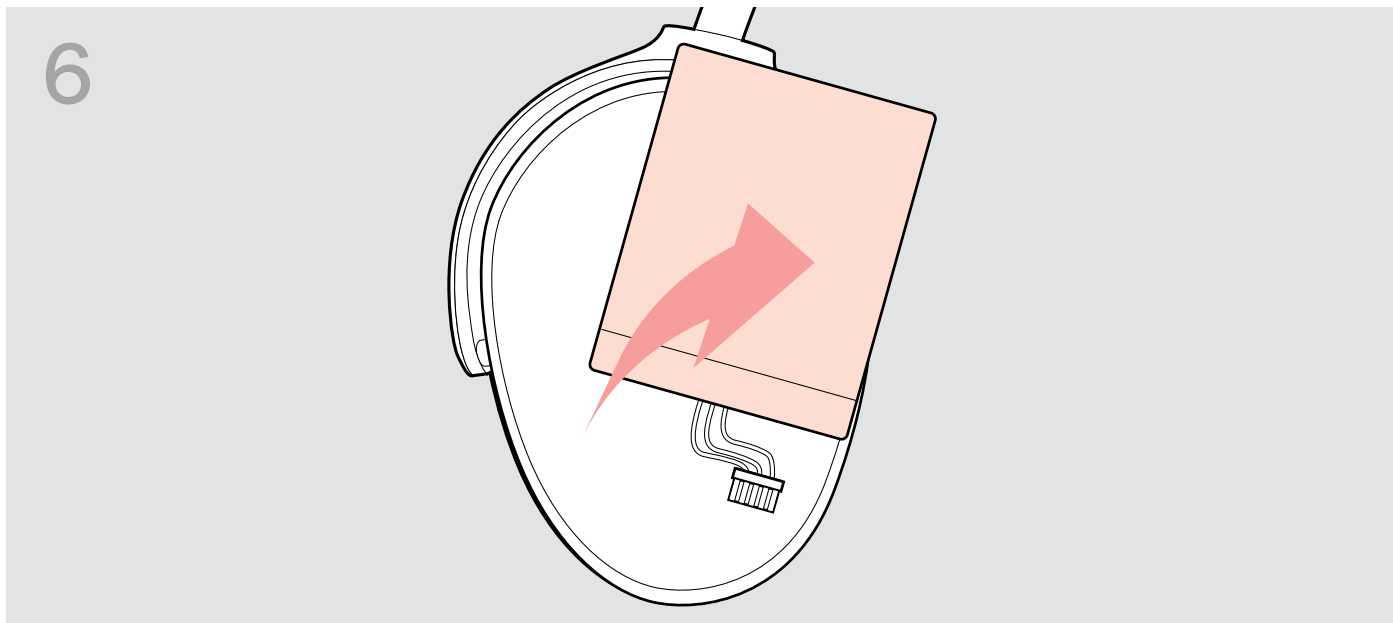
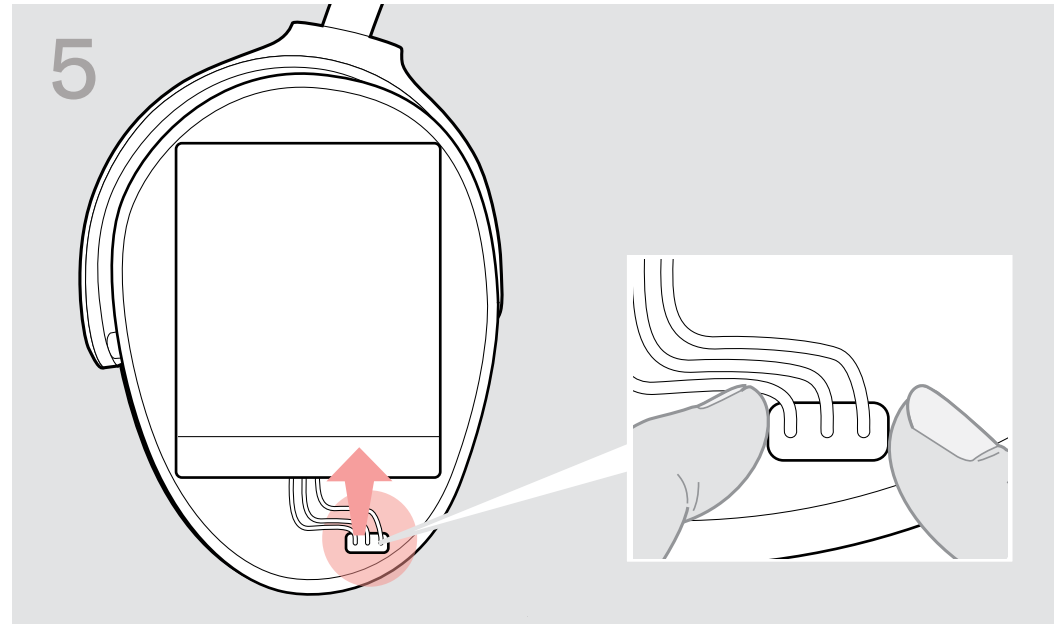
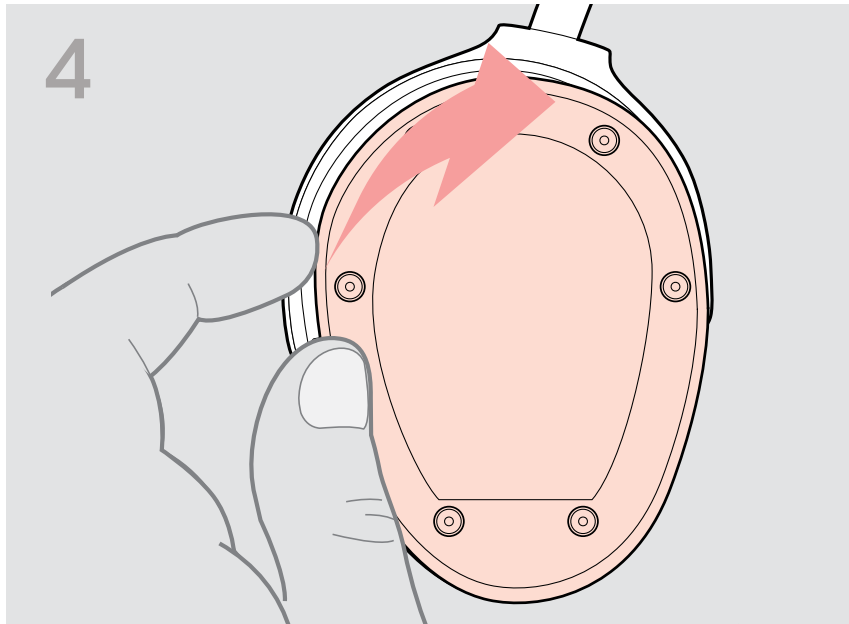
THE POWER OF AUDIO

Battery Removal Guide



1. Grab under the ring of the left ear pad (L marking) and pull it off the ear cup hooks.
2. Remove the stickers that cover the screws e.g. with a pair of tweezers.
3. Remove the 6 screws with a screwdriver.

Battery Removal Guide



4. Lift the cover.
5. Unplug the connector of the rechargeable battery.
6. Remove the rechargeable battery.