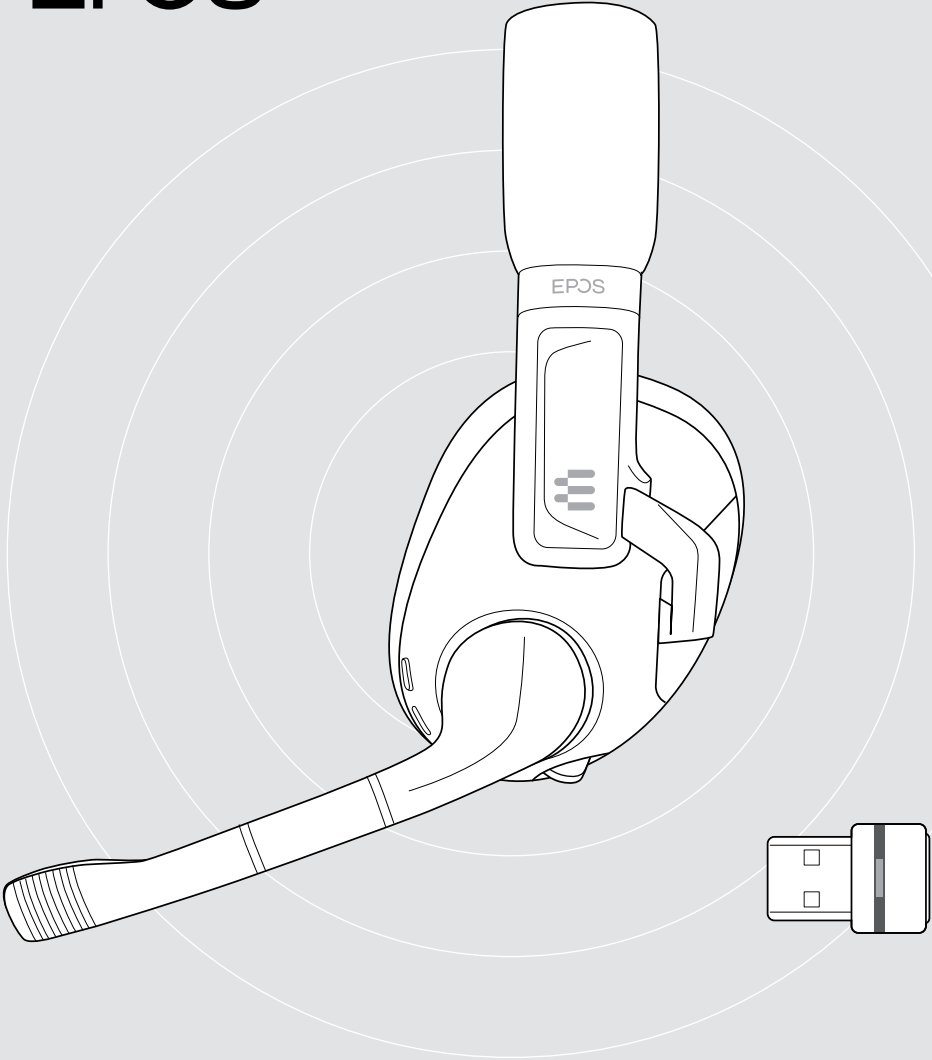


EPOS



H3PRO Hybrid

Wireless Gaming Headset with low latency dongle and Bluetooth®

Model: SCBT26

User Guide

Contents

Welcome	2
Package contents	3
H3PRO Hybrid at a glance	4
Headset at a glance	4
GSA H3PRO dongle at a glance	6
Icons at a glance	6
Getting started	7
Connection possibilities	7
A Connecting the dongle	8
Pairing with the dongle	9
B Connecting via audio cable	10
C Pairing with your wireless devices	11
D Connecting to PC via USB & charge the battery	13
Installing the EPOS Gaming Suite	14
Changing audio settings – Microsoft® Windows	14
Individually adjusting the headset	15
How to use – the basics	16
Switching the headset on - auto connect	16
Mixing audio: two devices connected	18
Changing the volume	19
Muting the headset's microphone	20
Using Active Noise Cancellation (ANC)	21
Handling calls	22
Activating surround sound or presets	23
Using the headset on the go	24
Switching the headset off	26
Charging and storing the headset	27
Good to know	29
Verifying remaining battery power	29
If you leave the Bluetooth or dongle's range	30
Adjusting the sidetone	31
Maintaining & updating products	32
Cleaning the products	32
Replacing the ear pads	33
Updating the firmware	34
Replacing/removing the rechargeable battery	34
If a problem occurs	35
Clearing the pairing list of the headset (Reset)	37
Clearing the pairing list of the dongle (Reset)	37
Specifications	38

Welcome

Ultimate Performance, Ultimate Immersion With ANC

The EPOS H3PRO Hybrid wireless closed acoustic headset with ANC is created for the gamer that accepts no compromises in their game audio while enjoying freedom of movement.

Cutting-edge wireless technology ensures lag-free low-latency transmission of audio cues via USB dongle for instant reaction.

Simultaneous Bluetooth® connectivity allows audio mixing and the ability to switch from your game to a call and back.

EPOS Hybrid products deliver multiple connection options. In the H3PRO Hybrid, lag-free wireless via USB dongle, Bluetooth® and exchangeable USB/console cables provides multi-platform compatibility.

The EPOS Gaming Suite provides 7.1 surround sound on the PC.

Dual microphones for better voice pickup and ANC eliminate miscommunications and distractions for full game immersion.

Key benefits & features

Cutting-edge wireless performance

Never miss a cue with premium game audio and secure lag-free wireless

Low-latency wireless connection

Lag-free transmission with USB dongle delivers the audio cues for instant reaction

On-board ANC

A built-in switch on the headset turns on ANC for full game immersion

EPOS audio technology

EPOS engineered audio delivers clarity, resolution and precision

EPOS Gaming Suite

Enhance your audio experience in the EPOS Gaming Suite for Microsoft® Windows

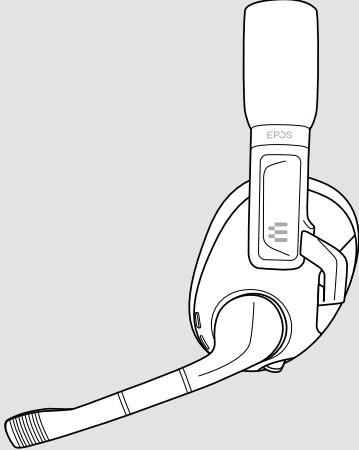
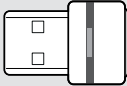
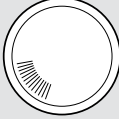
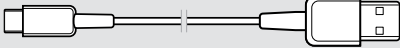
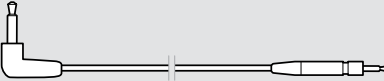
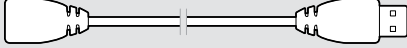

Audio mixing with Bluetooth®

Mix audio streams from your preferred platform with simultaneous Bluetooth®



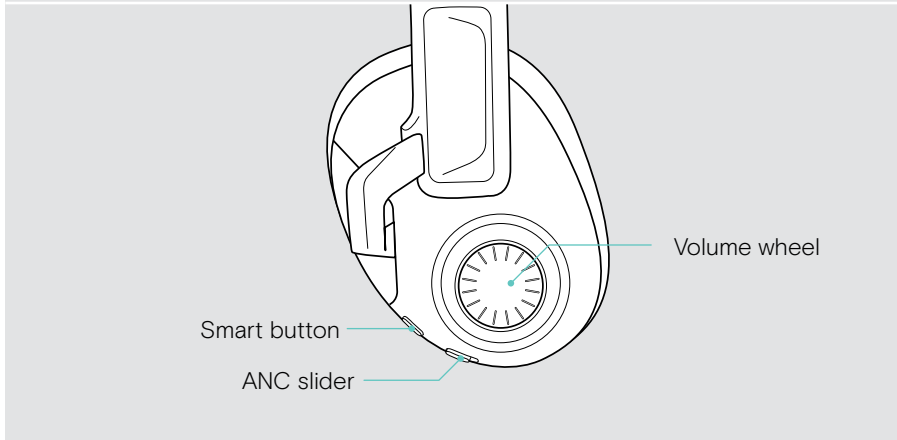
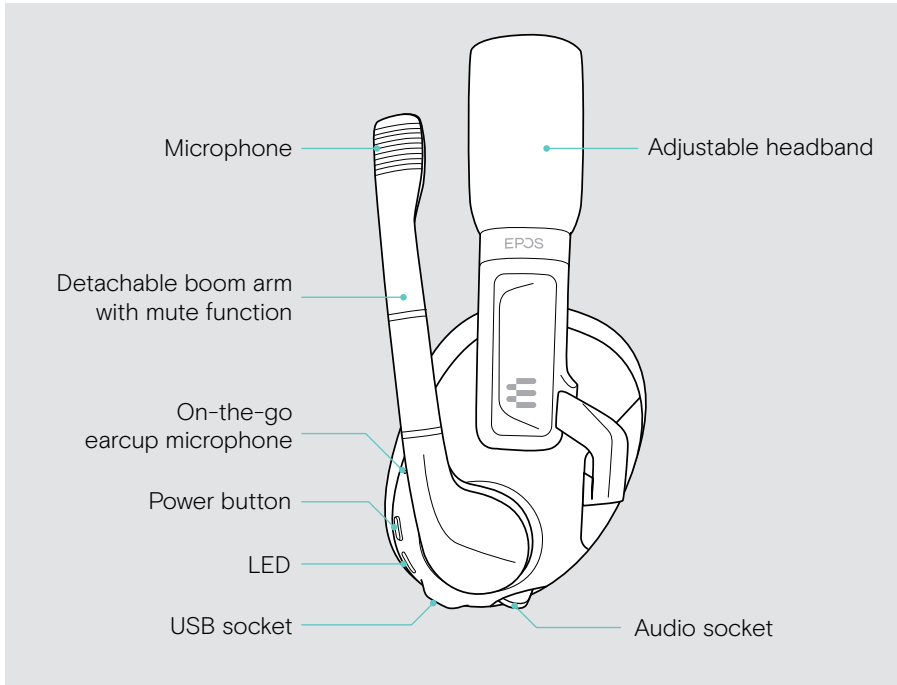
For safety instructions, consult the Safety Guide.

Package contents

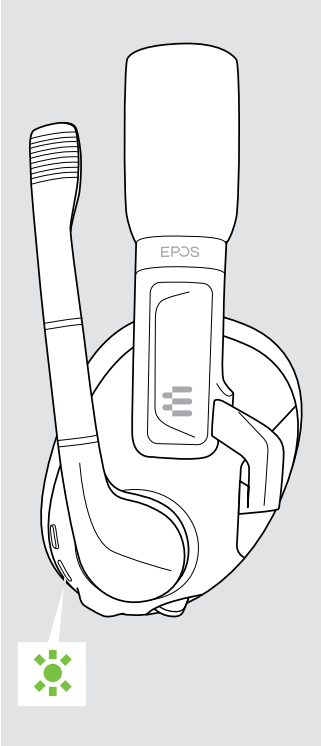










	<p>H3PRO Hybrid Wireless Gaming headset with low latency dongle and Bluetooth</p>
	<p>GSA H3PRO 2.4 GHz low latency dongle</p>
	<p>On-the-go cover plate instead of boom arm</p>
	<p>USB cable USB-C® to USB-A plug</p>
	<p>Audio cable 2.5 mm to 3.5 mm jack plug</p>
	<p>USB extension cable, 1.25 m</p>
	<p>Quick Guide Translation Sheet Safety Guide Compliance Sheet</p>

H3PRO Hybrid at a glance

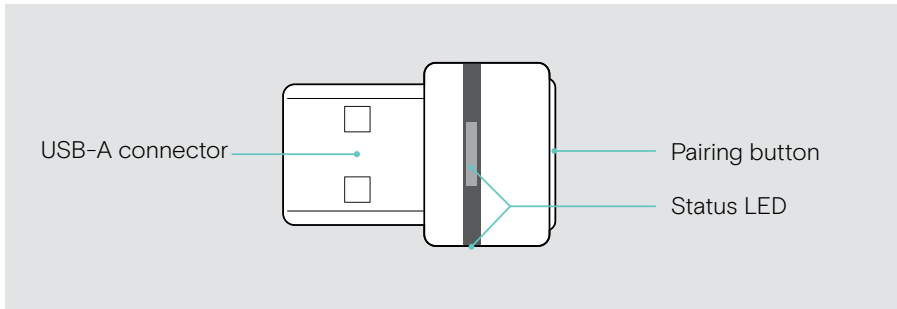
Headset at a glance



Overview of the headset LED

Headset	LED	Meaning
		Headset switches on
		Headset is in pairing mode
		Pairing to mobile device or dongle was successful Once the headset is successfully connected, the LED goes off.
		Headset switches off Pairing has failed or has been cancelled
		Rechargeable battery is weak
		Headset is being charged:
		color indicates battery status;
		LED goes off when fully charged
		
	Pairing list has been cleared	

GSA H3PRO dongle at a glance



Overview of the dongle LED

Dongle	LED	Meaning
		Dongle in pairing mode: searching for headsets to pair and connect
		Pairing successful
		Pairing failed
		Dongle tries to connect to the headset
		Dongle and headset connected

Icons at a glance

	Tap the button		Notes: Good to know
	Press the button twice		LED indications
	Press and hold the button		Voice prompt is announced

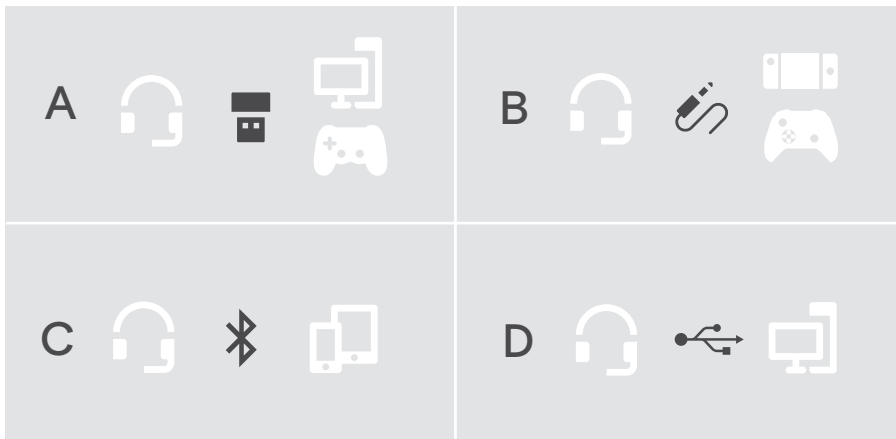
Getting started

Connection possibilities

You can connect the headset:

- **A** via the **low latency dongle** to a PC or PlayStation® PS5™ / PS4™ or
- **B** via the **audio cable** to a Nintendo Switch™, PlayStation® PS5™ / PS4™, Xbox® One & Series X/S or
- **C** via **Bluetooth** to a mobile device (e. g. smartphone, tablet) or
- **D** via the **USB cable** to a PC or PlayStation® PS5™ / PS4™.

You can also mix the audio from two sources – see page 18.

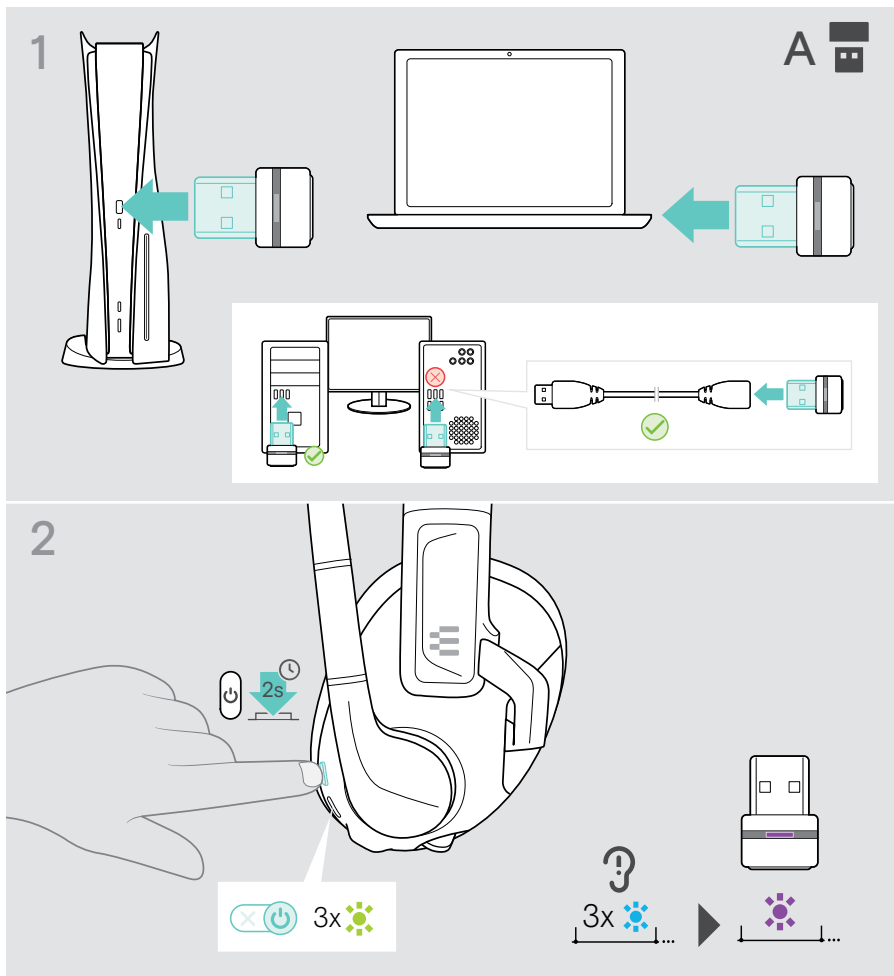


D If you connect the headset via USB cable it will automatically be charged.

A Connecting the dongle

You can connect the dongle e. g. to your PC or PlayStation. **Upon arrival the dongle is already paired with the headset.**

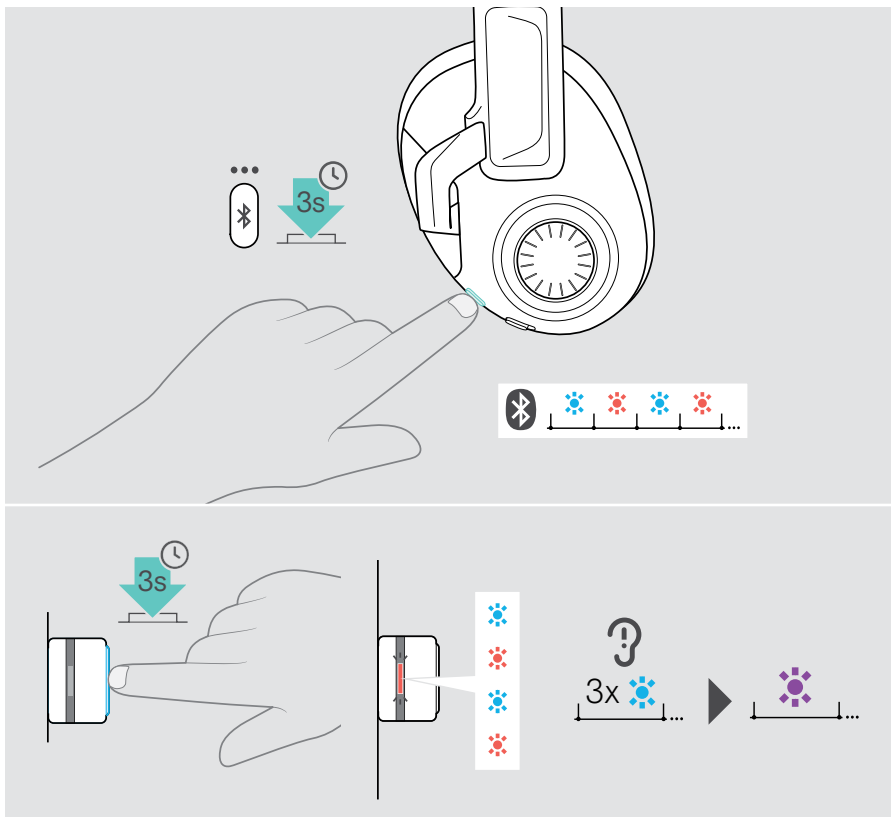
- 1 Plug the dongle into a **USB-A** port of your device. Use a port on the front of the housing **or** connect the **USB extension cable** in addition to avoid the rear as this might lead to disturbances. If you experience any lag, noise or range issues, use the extension cable.
- 2 Press the power button to switch the headset on.
Once the dongle and the headset are connected, both LEDs flash 3 times blue. The headset LED switches off, the dongle LED lights up constant.



Pairing with the dongle

Upon arrival the dongle is already paired with the headset. In case you reset your paired device list:

- > Plug the dongle in and switch the headset on – see chapter before.
- > Press and hold the smart button until the LED alternately flashes blue and red (pairing mode).
- > Press and hold the dongle's button until the LED alternately flashes blue and red (pairing mode). Once the dongle and the headset are connected, both LEDs flash 3 times blue. The headset LED switches off, the dongle LED lights up constant.



It may take a few moments for the devices to find each other and connect.

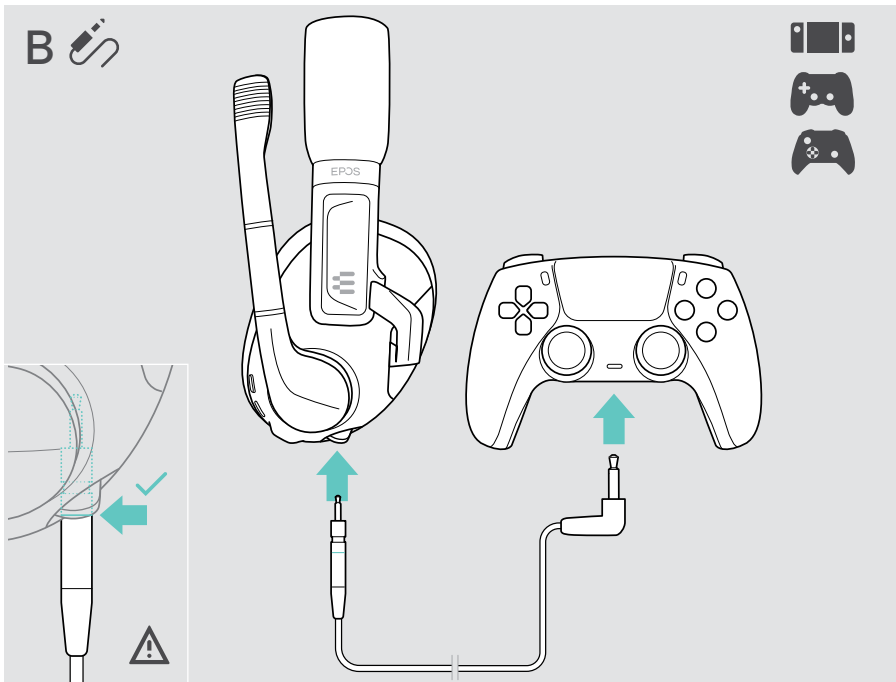
B Connecting via audio cable

The audio cable is mainly used for:

- Nintendo Switch™
- PlayStation PS5™ / PS4™
- Xbox® One & Series X/S

To connect the audio cable:

- > Insert the small jack plug into the audio socket of the headset. Make sure, that the marking on the plug disappears in the socket.
- > Connect the 3.5 mm jack plug to the audio socket of your device.
- > Press the power button to switch the headset on (see page 16).



To disconnect the audio cable:

- > Pull the plugs out of the headset and your device.

C Pairing with your wireless devices



CAUTION

Danger of malfunction!

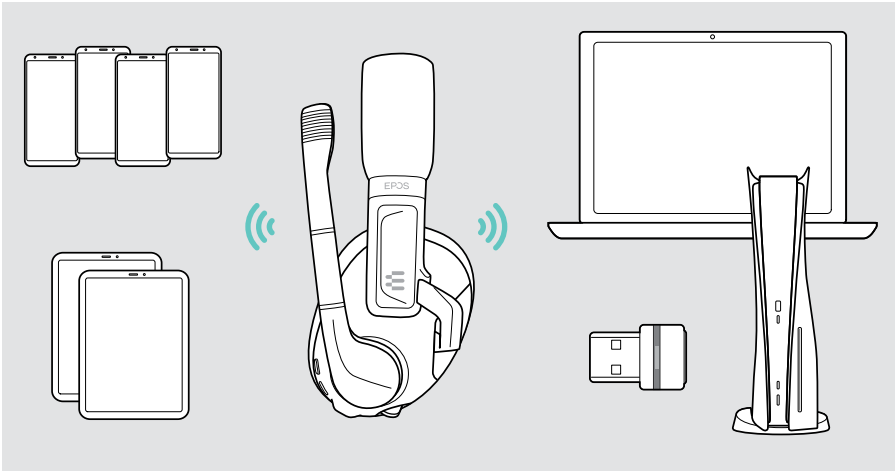
The transmitted radio waves of mobile devices can impair the operation of sensitive and unprotected devices.

- > Only make calls with the headset in locations where wireless Bluetooth transmission is permitted.

The headset complies with the Bluetooth 5.2 standard. Bluetooth devices need to support the “advanced audio distribution profile” (A2DP).

You can connect the headset either via Bluetooth to mobile devices (e. g. smartphone, tablet) **or** together with the dongle GSA H3PRO to a PC or PlayStation. The delivered dongle is already paired with the headset.

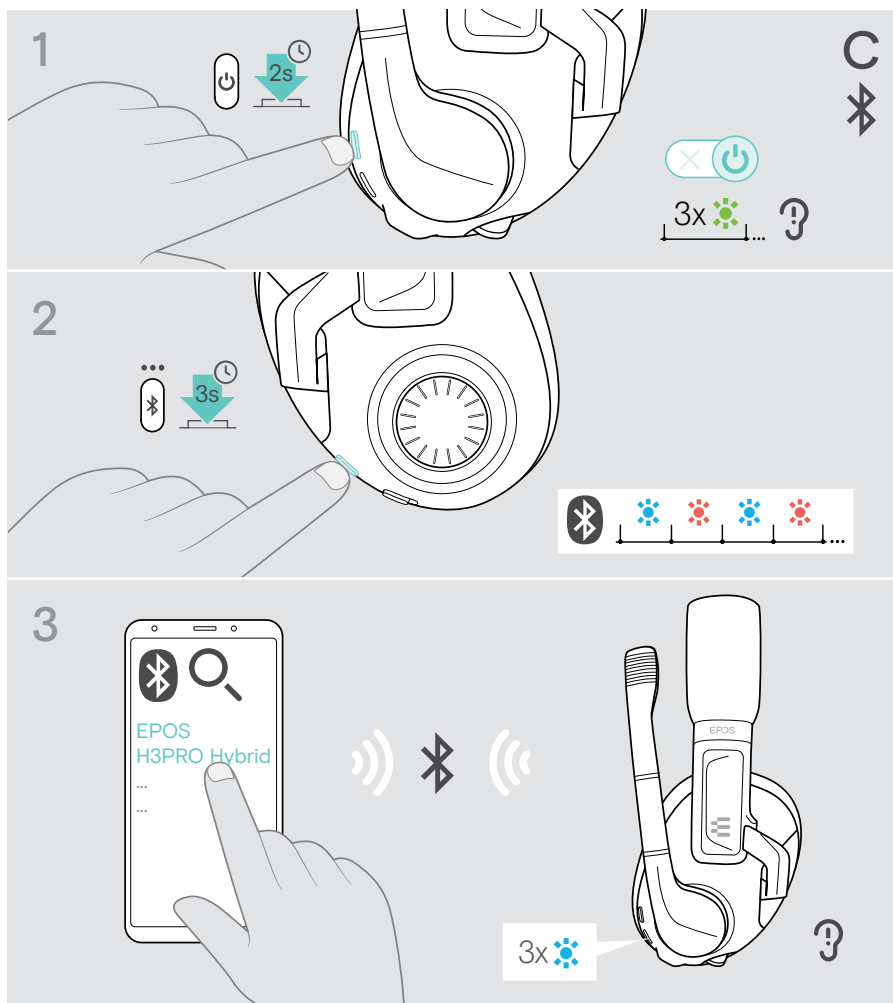
The headset can save up to eight paired devices. If you pair the headset with a ninth device, the first device in the pairing list will be overwritten. If you want to re-establish a connection with this device, you have to pair it again.



You can pair up with more devices, but only be connected to one dongle and one Bluetooth device at a time. It is neither possible to combine two dongles nor two Bluetooth devices.

Pairing the headset via Bluetooth with a mobile device

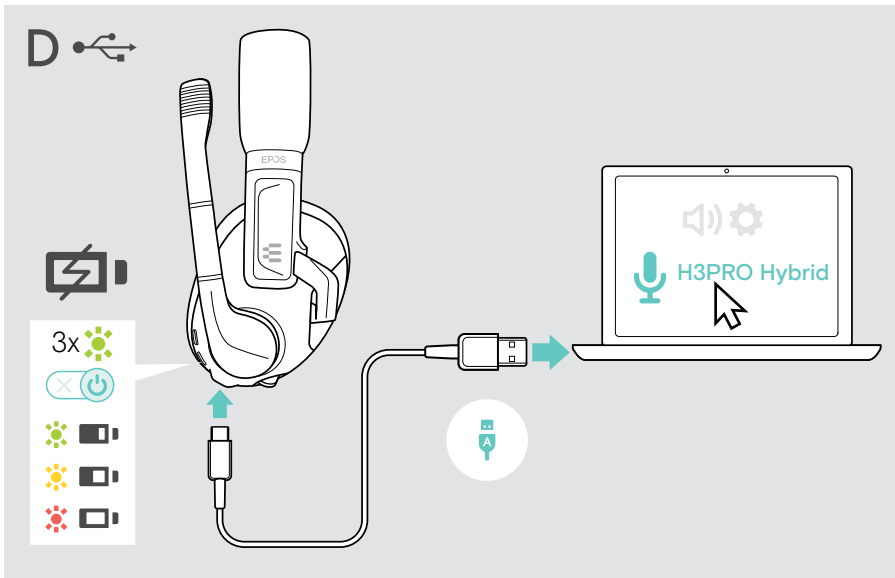
- 1 Press the power button to switch the headset on.
- 2 Press the smart button until the LED alternately flashes blue and red (pairing mode).
- 3 Search for Bluetooth devices and select **EPOS H3PRO Hybrid** to establish the connection – see instruction manual of your mobile device. Once the headset is paired with the mobile device, the LED goes off.



To cancel pairing:
 > Press the smart button once.

D Connecting to PC via USB & charge the battery

- > Connect the small plug of the USB cable to the headset's USB socket.
- > Connect the other plug to a **USB-A** socket of your PC.
The headset switches on automatically. The LED flashes green 3 times. You hear a remaining battery power voice prompt – see page 29. The battery is being charged. The LED pulses slowly to indicate the battery status.
- > Change the audio settings – if required – and install the EPOS Gaming Suite (see next chapter).



To disconnect the USB cable:

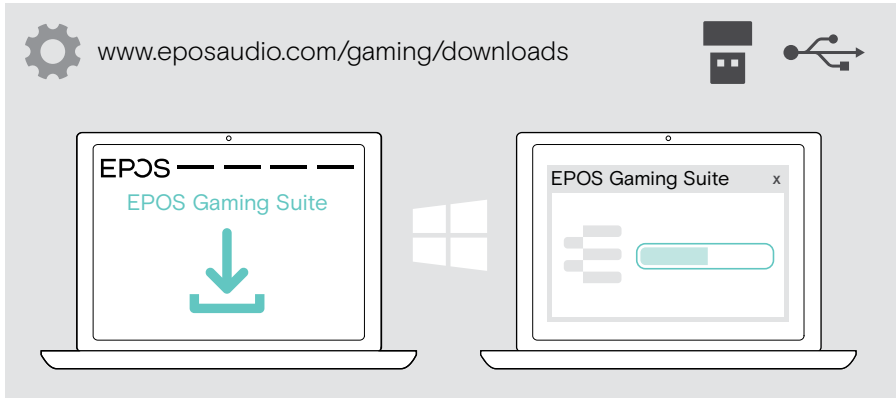
- > Pull the plugs out of the headset and your device. The headset switches off automatically – unless there is an already established Bluetooth connection.

Installing the EPOS Gaming Suite

The free software **EPOS Gaming Suite** allows you to add value to your headset. The software is only available for Microsoft® Windows.

It enables headset configurations e. g. of the smart button, equalizer, sidetone, noise reduction and update of your devices.

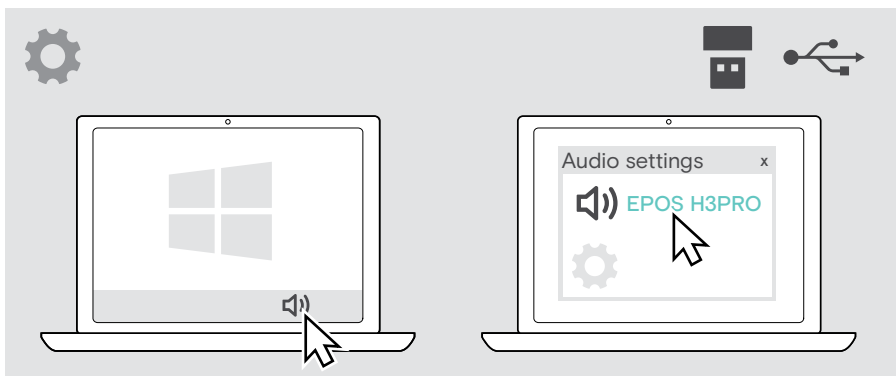
- > Download the software from www.eposaudio.com/gaming/downloads.
- > Install the software.



Changing audio settings – Microsoft® Windows

Windows usually changes the audio settings automatically if you connect the dongle or the USB cable. If the devices are connected but you hear no sound:

- > Right-click the audio icon.
- > Select under output **EPOS H3PRO Dongle** or **EPOS H3PRO Hybrid** as main audio. Disconnect the dongle if you wish to play on USB, as the dongle is prioritized.



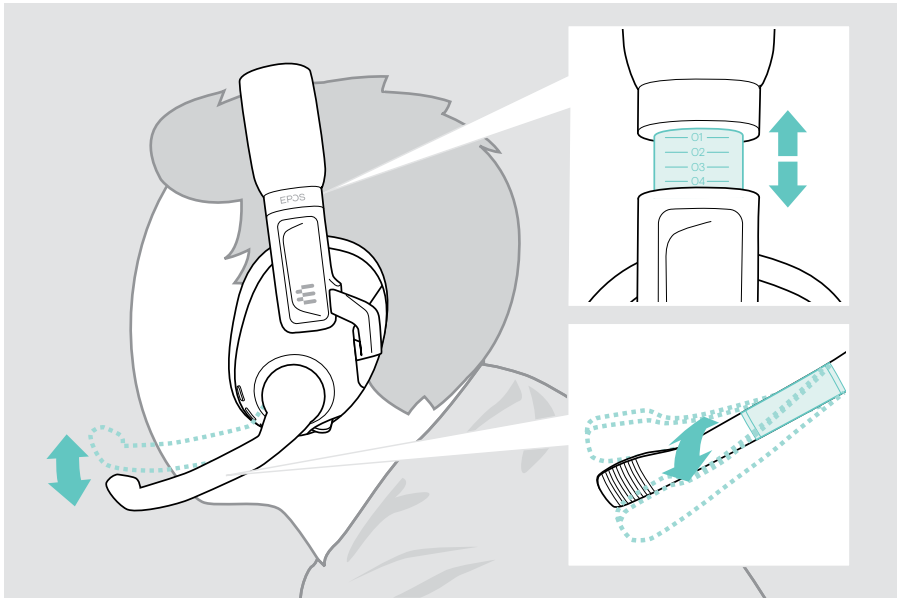
Individually adjusting the headset

For good sound quality and best possible wearing comfort, the headset has to be adjusted to properly fit your head.

- > Wear the headset so that the headband runs over the top of your head.

Adjusting the headband and the boom arm

- > Adjust the headset so that
 - your ears are comfortably covered by the ear pads,
 - you feel even, gentle pressure around your ears,
 - a snug fit of the headband on the head is ensured.
- > Bend the microphone boom so that the microphone is in line with your mouth and about 0.8" (2 cm) from the corner of your mouth.



How to use – the basics



CAUTION

Risk of hearing damage!

Listening at high volume levels for long periods can lead to permanent hearing defects.

- > Set the volume to a low level before putting on the headset.
- > Do not continuously expose yourself to high volumes.

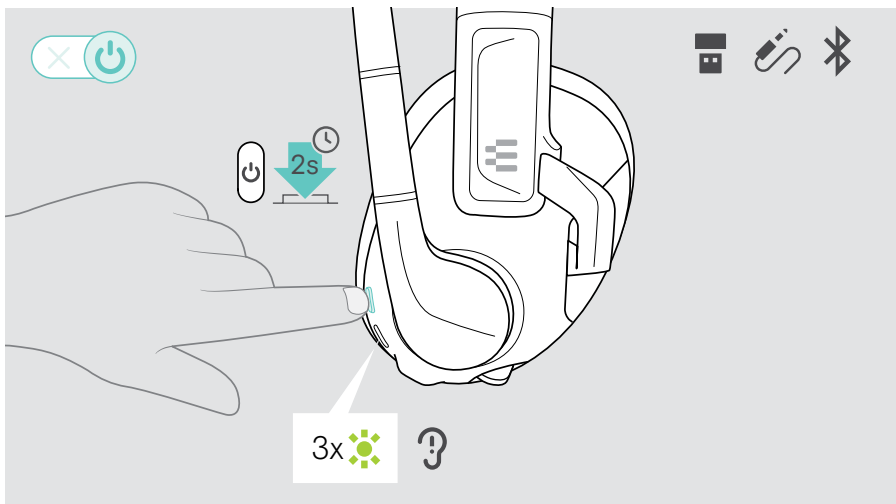
Switching the headset on – auto connect



The headset switches on **automatically**, if you connect it via the **USB cable**.

For all other connections:

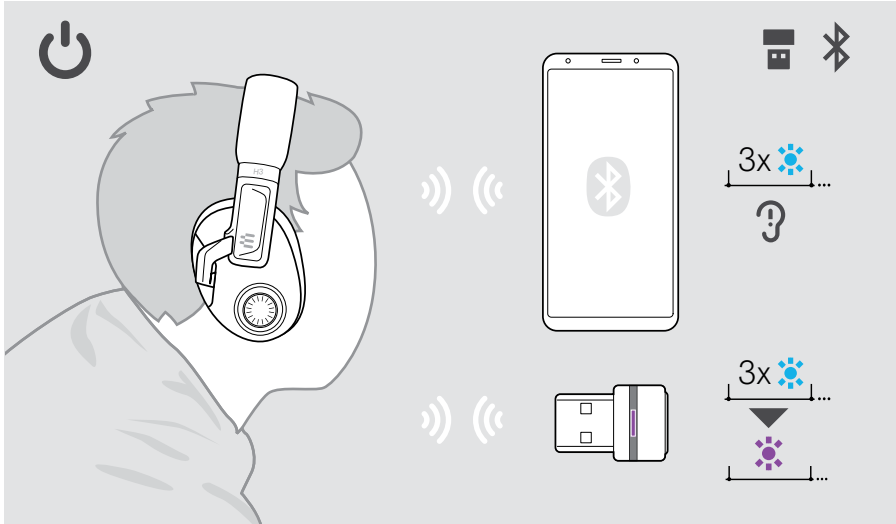
- > Press the power button to switch the headset on.
The LED flashes 3 times green. You hear a remaining battery power voice prompt – see page 29. The headset tries to connect to wireless devices automatically – see next chapter.



Automatic wireless connection

After switch on, the headset automatically tries to connect to the latest used dongle and Bluetooth device. If these are not available the headset tries to find other paired devices.

Once the connection is successfully established, you hear a voice prompt and the LEDs flash 3 times blue.



If the headset does not find a paired device to connect to, it automatically switches off after 30 minutes.

Connecting wireless devices manually

After a while the automatic search ends. If you want to connect to your dongle or Bluetooth device after the automatic search has ended, you need to connect manually:

- > Activate **EPOS H3PRO Hybrid** in the Bluetooth devices list of your connected Bluetooth device [or](#)
- > Switch the headset off and on, to connect it to the last used devices.

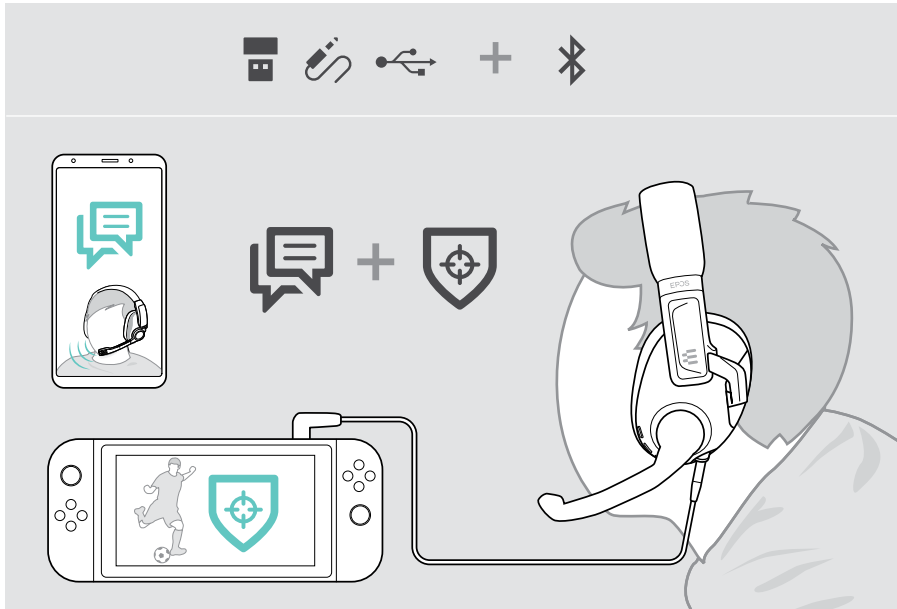
Mixing audio: two devices connected

Audio mixing allows you to e. g. play your Game on one device and have a chat on the second device.

You can combine two audio sources:

1 **primary device**: Dongle, audio cable, USB connection and

2 **secondary device**: Bluetooth connection



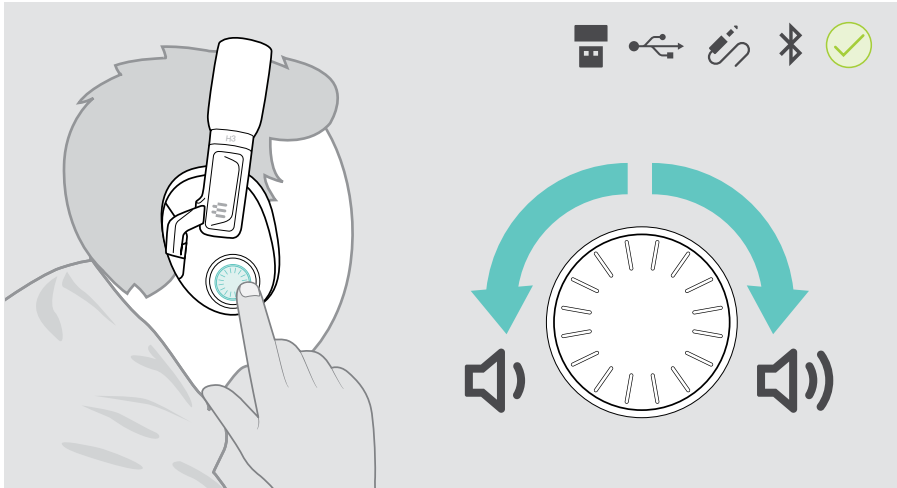
i

The combined Bluetooth and dongle connection is only supported by Android devices.

Changing the volume

- > Turn the volume wheel
 - clockwise to increase or
 - counter-clockwise to reduce the volume.

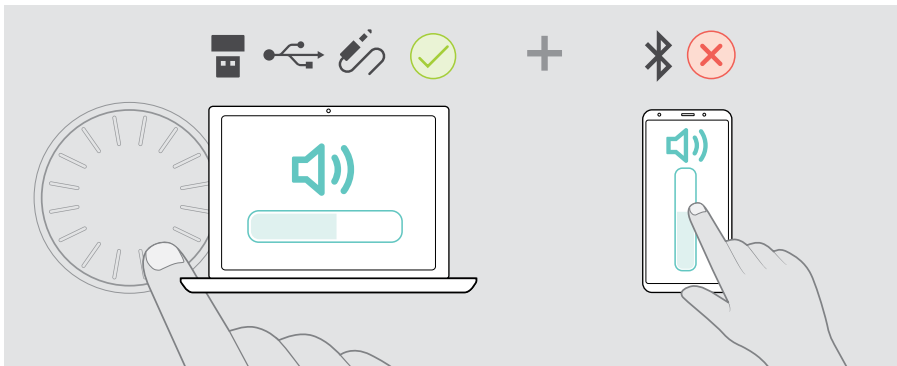
Alternatively you can adjust the volume on your connected device.



Changing the volume while audio mixing

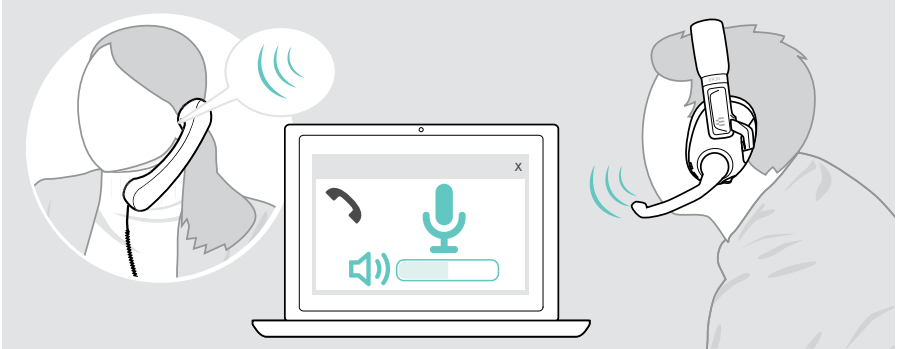
If you have two devices connected:

- > Turn the volume wheel to change the volume for the primary device (Dongle, audio cable, USB).
- > Change the volume of your secondary Bluetooth device manually.



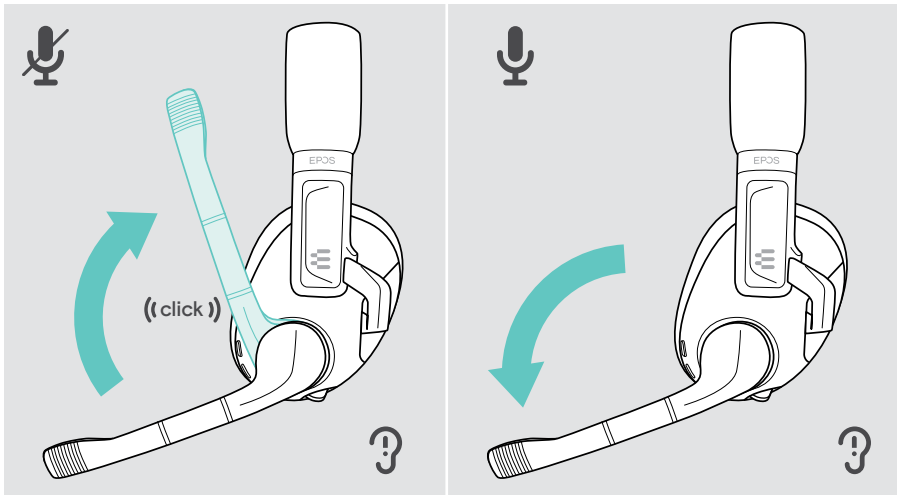
Adjusting the headset's microphone volume for softphones

- > Initiate a call on your connected device to someone who will help you find the correct volume setting for your microphone.
- > Change the microphone volume in your softphone application and/or in your PC audio application.



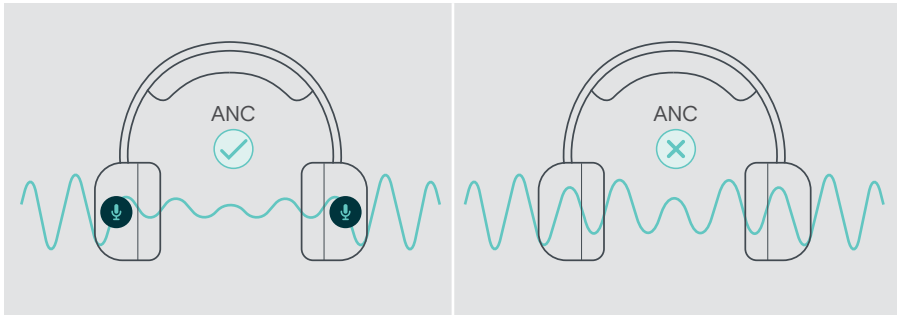
Muting the headset's microphone

- > Move the boom arm
 - up until you hear a click to mute or
 - down to unmute the microphone.



Using Active Noise Cancellation (ANC)

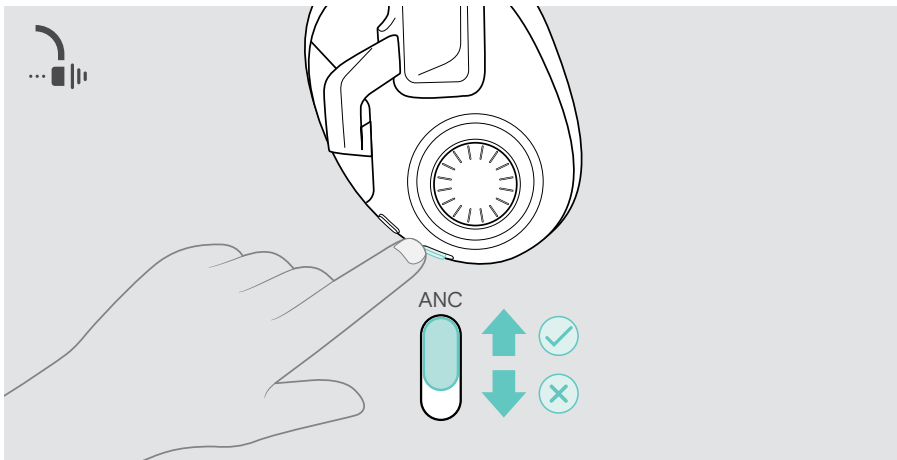
This headset provides attenuation of ambient noise using Active Noise Cancellation (ANC) technology. Special microphones optimize speech and reduce background noise.



If you are in a noisy environment but would like to have your own quiet space, you can use the headset itself, disconnected from any device, and simply benefit from ANC.

You can activate ANC if the battery is sufficiently charged and if the headset is switched on.

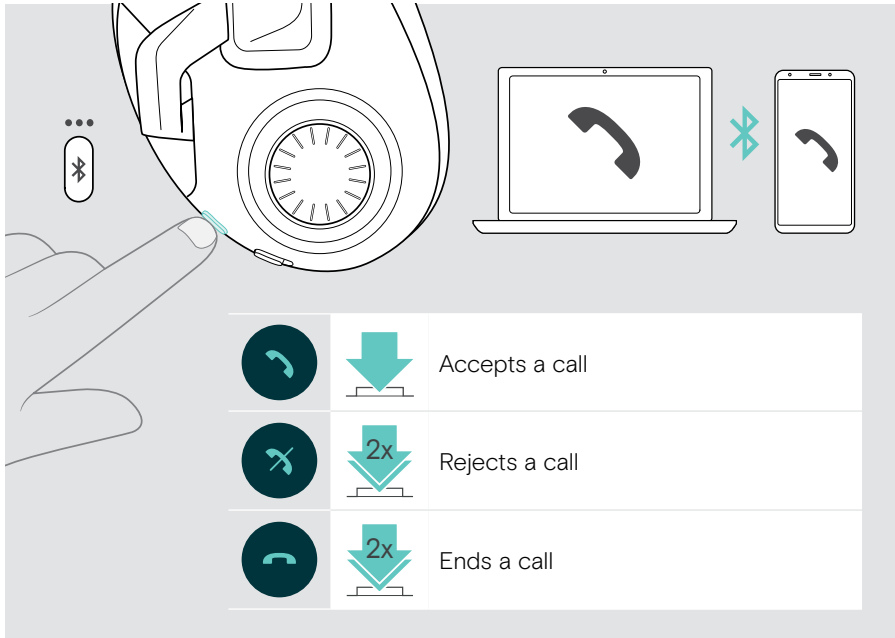
- > Slide the ANC slider
 - up to activate ANC or
 - down to deactivate ANC



Handling calls

You can handle calls of devices that are **connected via Bluetooth**. These functions are device and application dependent.

- > Initiate calls via your connected device.
- > Press the smart button:



Activating surround sound or presets

In addition to the call handling, you can activate additional functions for the smart button in the EPOS Gaming Suite (see page 14) to either **surround sound** or **preset switcher**.

To change the setting for the smart button:

- > Connect the headset to your PC (see page 13).
- > Change and save the settings for the smart button via EPOS Gaming Suite.



- > Press the smart button:

Presets:

- FLAT (no equalizer)
- MUSIC
- ESPORT (treble)
- MOVIE
- Customized*

		Surround sound: switches between stereo and surround
		Preset switcher: switches between equalizer presets*

*Customized preset: You can also add your own preset in the EPOS Gaming Suite. For more information, visit www.eposaudio.com/gaming.

Using the headset on the go

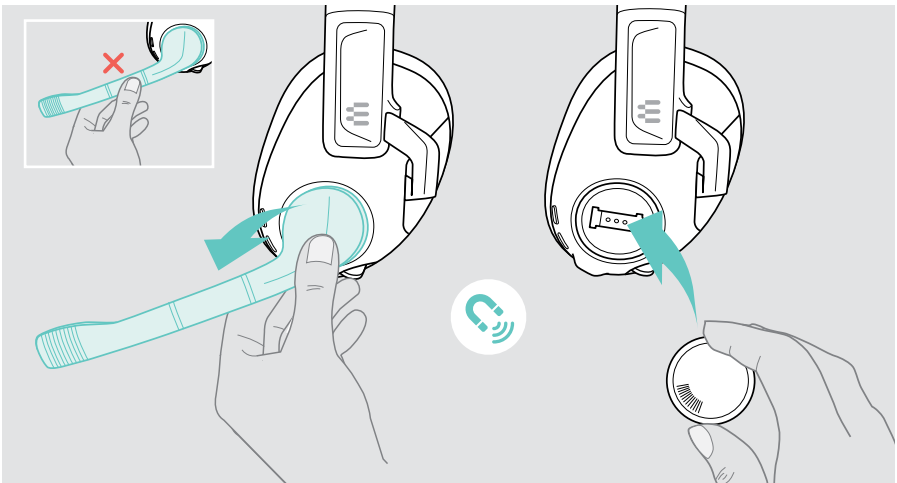
If you want to use the headset on-the-go, you can detach the magnetic boom arm and replace it with the cover plate.

You can still make calls as the headset comes with a second microphone in the ear cup. This microphone can only be muted via your connected device.



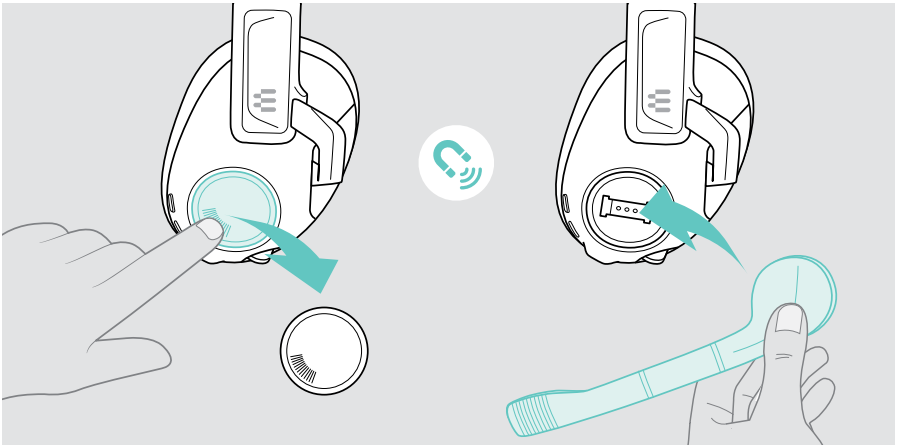
Replacing the boom arm with the cover plate

- > Grab the boom arm close to the ear cup and lift it. Do not pull on the bendable or microphone part.
- > Attach the magnetic cover plate.



Attaching the boom arm

- > Press on the markings of the cover plate to loosen it.
- > Attach the boom arm.



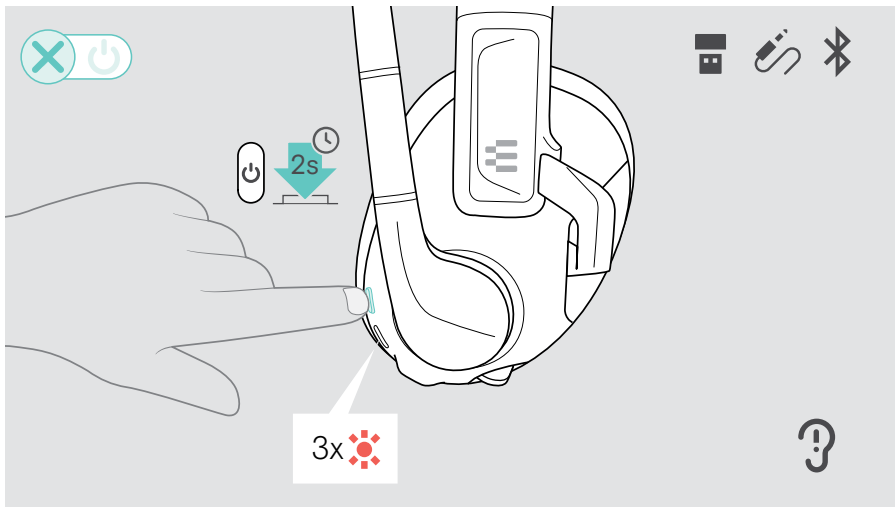
Switching the headset off



The headset switches off **automatically**, if you disconnect the **USB cable** – unless there is a Bluetooth connection.

For all other connections:

- > Press the power button to switch the headset off.
The LED flashes red 3 times and switches off. The voice prompt “power off” is announced in the headset.



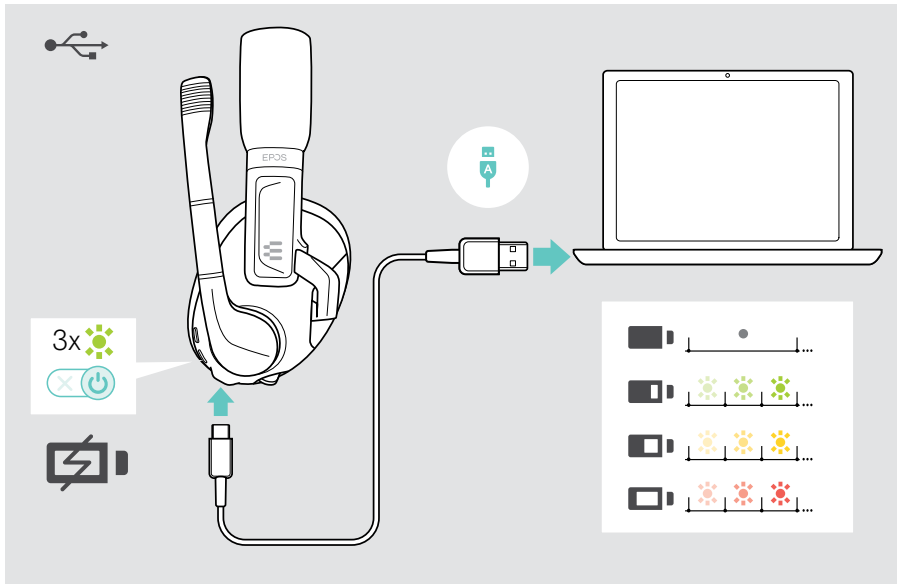
If the headset is connected wirelessly and there is no audio signal, it switches off after 30 minutes to save battery power.



Charging and storing the headset

Charging the headset

- > Connect the USB cable to your headset and your PC or PlayStation (see page 13) or a certified wall power supply*.

The headset switches on automatically. The battery is being charged. The LED pulses red, yellow or green – depending on the battery status and switches off when fully charged (approx. 1 hour 50 minutes).



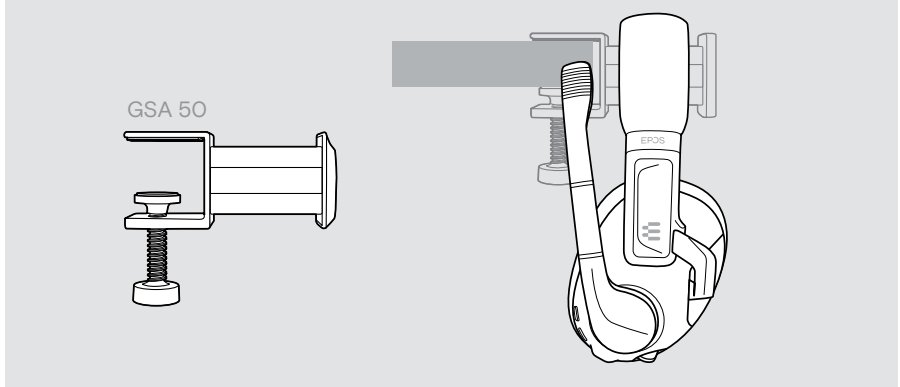
  If the battery level of the headset gets low, the LED flashes red and the voice prompt “recharge headset” is announced several times. When the battery is flat, the headset switches off automatically.

*Only use a USB power supply with maximum 5 V ±0.25 V.

Storing the headset

- > Store the headset in a clean and dry environment.

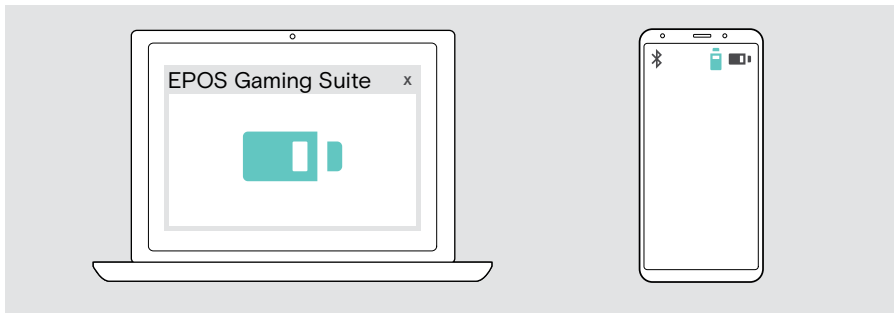
The GSA 50 headset hanger is the perfect accessory for keeping your gaming headset conveniently out of sight, yet easy to reach. The hanger is available at www.eposaudio.com.



Good to know

Verifying remaining battery power

You can check the battery status of the headset in the EPOS Gaming Suite. Some mobile devices also indicate the battery status.



The battery status is given every time you switch on the headset or plug in the USB cable.

LED	Information announced	Battery power
	"More than 80 percent battery left"	> 80%
	"More than 60 percent battery left"	> 60%
	"More than 40 percent battery left"	> 40%
	"More than 20 percent battery left"	> 20%
	Automatic voice prompt: "Recharge headset" > Charge the headset (see page 27).	< 20%

If the battery level of the headset gets low, the LED flashes red and the voice prompt "recharge headset" is announced several times. When the battery is flat, the headset switches off automatically.

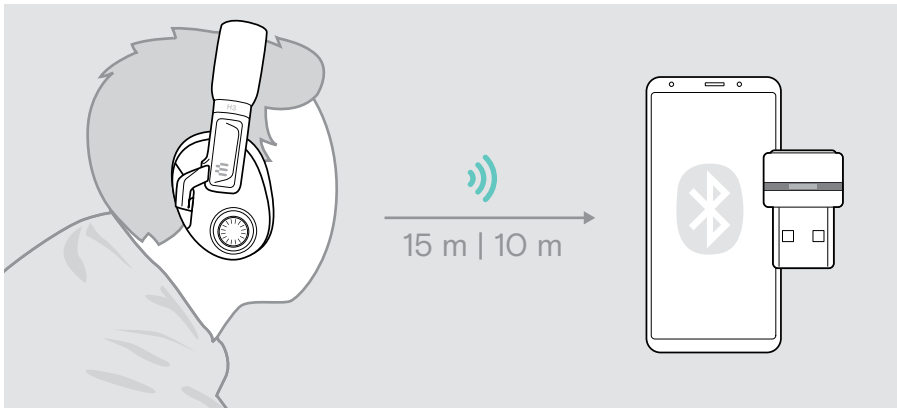
If you leave the Bluetooth or dongle's range

The range between the headset and the connected device is device dependent. The transmission range largely depends on environmental conditions such as wall thickness, wall composition etc.

With a free line of sight, the Bluetooth transmission range is up to 15 meters and up to 10 meters via low-latency connection.

If the audio quality gets worse or the link breaks down completely:

- > Re-enter the radio range of the Bluetooth device or dongle to re-connect.

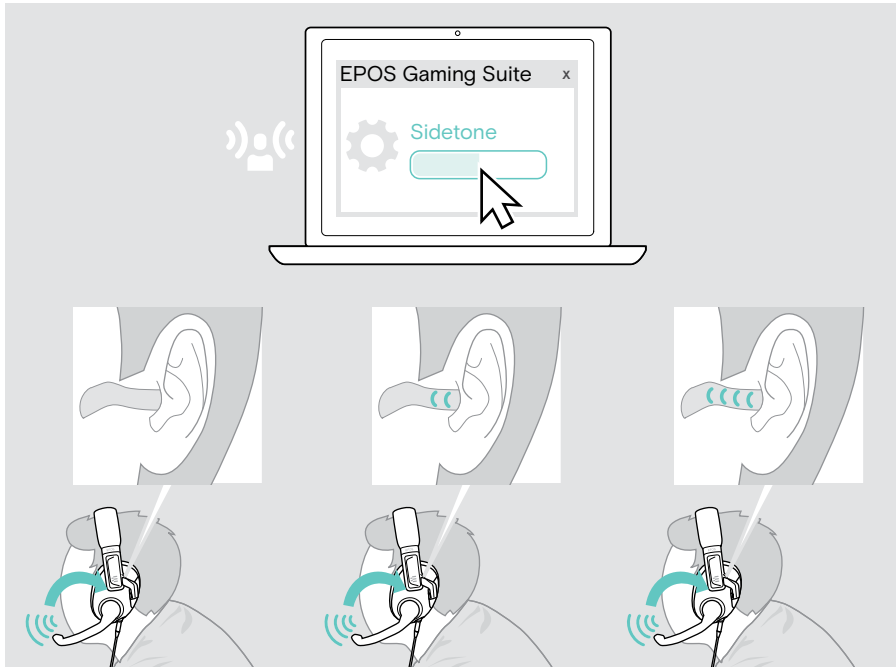


Adjusting the sidetone

With the sidetone settings you can adjust the loudness of your own voice being played back in the headset.

- > Open the EPOS Gaming Suite (see page 14) and change the sidetone setting.

Your setting will be saved on the headset, so it is available for all other gaming platforms.



Sidetone works with the attached boom arm microphone only.

Maintaining & updating products

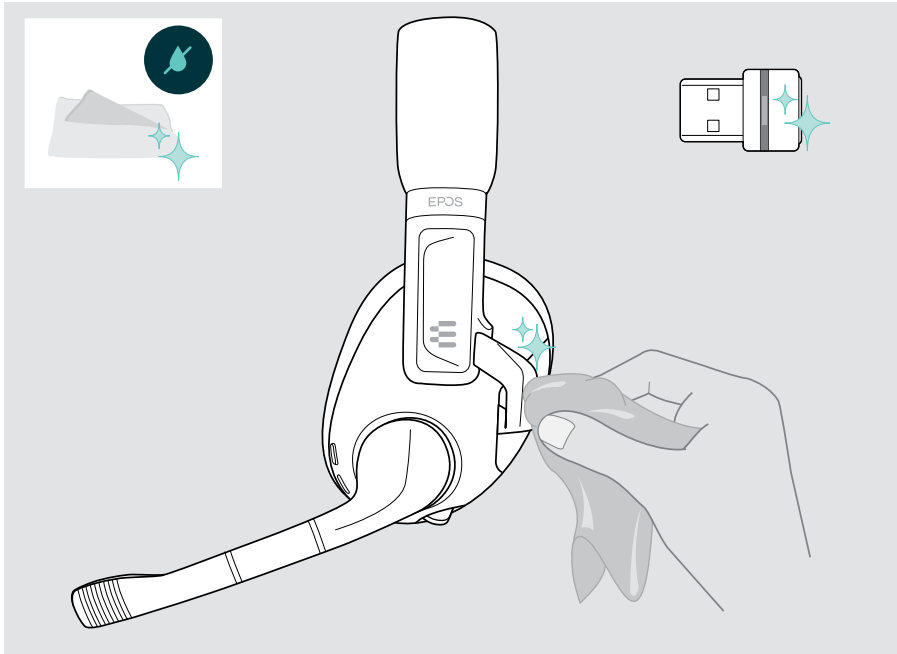
Cleaning the products

CAUTION

Liquids can damage the electronics of the product!

Liquids entering the housing of the device can cause a short circuit and damage the electronics.

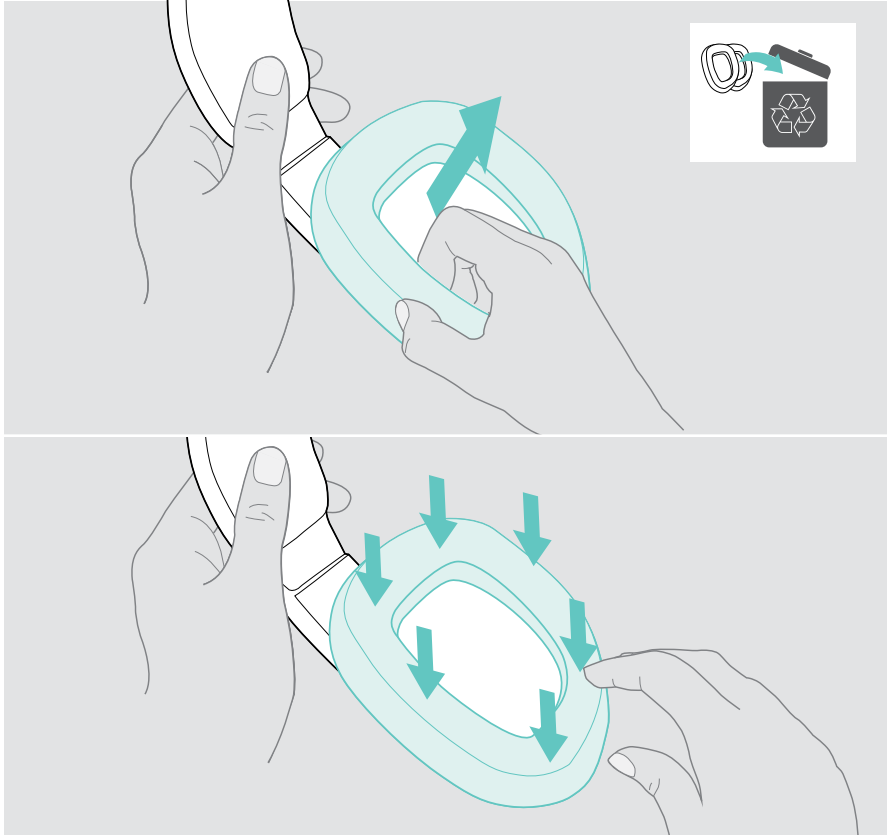
- > Keep all liquids far away from the product.
- > Do not use any cleansing agents or solvents.
- > Use a dry cloth to clean the product only.



Replacing the ear pads

For hygienic reasons, you should replace the ear pads from time to time. Spare ear pads are available from your EPOS partner.

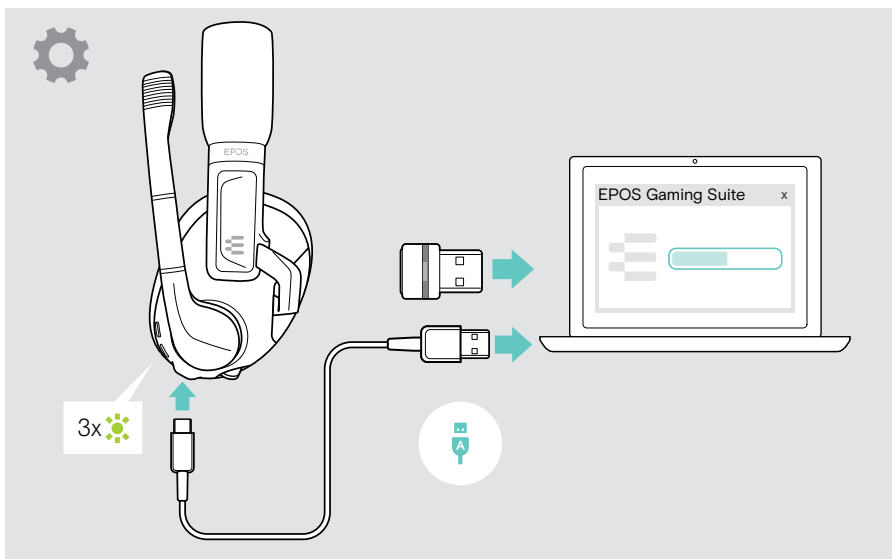
- > Carefully remove the old ear pad from the ear cup.
- > Attach the new ear pad to the ear cup by pressing firmly around the ear pad.



Updating the firmware

You can update the firmware of your headset and dongle by using the free **EPOS Gaming Suite** software (see page 14).

- > Connect the USB cable to your headset and your PC.
The headset switches on. **OR**
- > Plug the dongle into the USB port of your PC.
The LED flashes blue.
- > Start the **EPOS Gaming Suite**. If there is a new firmware available the software will guide you through the update process.



Replacing/removing the rechargeable battery

The rechargeable battery must only be replaced or removed by an authorized EPOS service center.

- > Contact your EPOS service center if the rechargeable battery needs to be replaced. To find an EPOS service partner in your country, visit www.eposaudio.com.

If a problem occurs...

Problem	Possible cause	Solution	Page
Headset cannot be switched on	Rechargeable battery empty	> Recharge the headset battery.	27
Active Noise Cancellation (ANC) cannot be turned on	Rechargeable battery empty	> Recharge the headset battery.	27
	Headset switched off	> Switch the headset on.	16
No audio signal or drop outs	Headset not paired with a Bluetooth device or dongle	> Pair the headset.	11
	Volume adjusted too low	> Increase the volume on the headset or your connected device.	19
	Headset or connected device switched off	> Switch the headset or device on.	16
	Audio cable's plugs not fully inserted	> Insert the plugs again.	10
	USB cable's plugs not fully inserted	> Insert the plugs again.	13
Headset cannot be connected via Bluetooth	Headset not paired	> Pair the headset.	11
	Bluetooth at connected device turned off	> Turn Bluetooth on.	–
	Dongle not plugged in	> Plug the dongle into the USB port of your PC or PlayStation.	8
Headset cannot be switched off	Headset connected via the USB cable: auto on	> Disconnect the USB cable.	13
		> Switch the headset off.	16
Dongle use: Disturbed sound, lag, noise or range reduced	Dongle connected on the rear of the device	> Use a port on the front of the housing or connect the USB extension cable.	8
	Transmission disturbed by noise from USB port	> Connect the USB extension cable to change the dongle position.	8

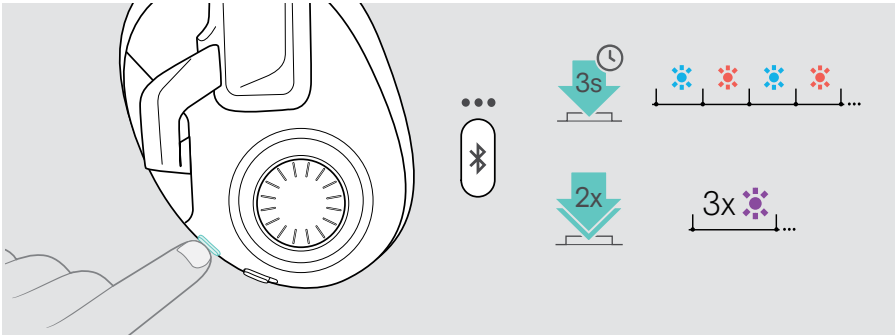
Problem	Possible cause	Solution	Page
Headset or dongle does not react to any button press	Software or hardware problems	> Switch the headset off and on again.	26 16
		> Unplug and plug in the dongle again.	8
		> Clear the pairing list of the headset.	37
		> Clear the pairing list of the dongle.	37
		To reset the headset: > Press the power and smart button at the same time. The headset LED flashes and the headset switches off.	–

If a problem occurs that is not listed here or if the problem cannot be solved with the proposed solutions, please contact your local EPOS partner for assistance.

To find an EPOS partner in your country, search at www.eposaudio.com.

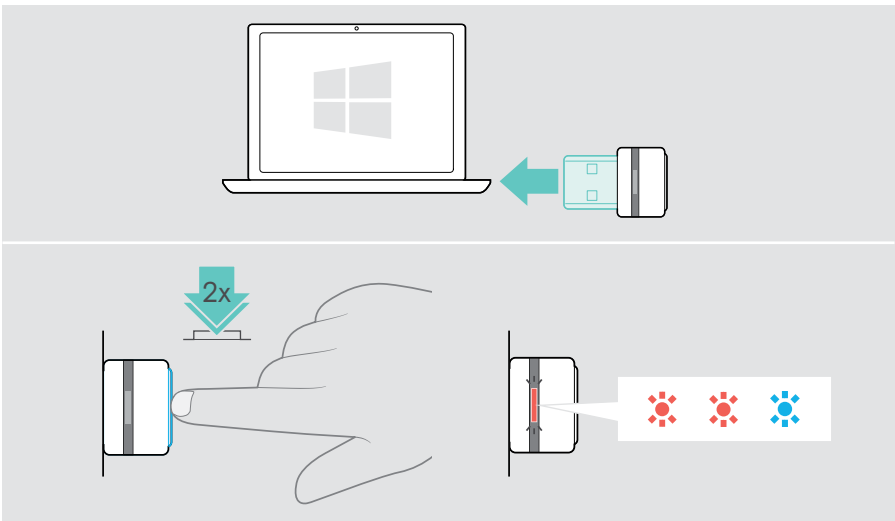
Clearing the pairing list of the headset (Reset)

- > Press the power button to switch the headset on.
- > Press and hold the smart button until the LED alternately flashes blue and red (pairing mode).
- > Press the smart button again 2 times. The LED flashes purple 3 times. The pairing list is cleared. The headset tries to pair with wireless devices (see page 11).



Clearing the pairing list of the dongle (Reset)

- > Plug the dongle into the USB port of your PC or PlayStation.
- > Double press the dongle's button. The LED flashes two times red and one time blue. The pairing list is cleared. The dongle tries to pair with wireless devices (see page 9).



Specifications

H3PRO Hybrid headset

Dimensions (W x H x D)	183 x 176 x 90 mm / 7.2 x 6.9 x 3.5 in
Weight	308 g / 0.67 lbs / 10.69 oz
Connector	<ul style="list-style-type: none"> • Low latency dongle • Bluetooth • Console cable: 1 x 3.5 mm audio jack 4 pole; length: 1.5 m • USB-C to USB-A cable; length: 2 m • Extension cable; length: 1.25 m
Standby time	<ul style="list-style-type: none"> • up to 750 hours (ANC OFF) • up to 19 hours (ANC ON)
Talk time via Bluetooth	<ul style="list-style-type: none"> • up to 42 hours (ANC OFF) • up to 19 hours (ANC ON)
Charging time	approx. 2 hours
Rechargeable battery (built in)	Lithium Polymer / 3.7 V / 530 mA
Charging voltage	max. 5.5 V / max. current 560 mA
Speaker principle	dynamic, closed
Frequency response	Headphone: 20 Hz – 20,000 Hz Microphone: 100 Hz – 7,500 Hz
Sensitivity headphone	116 dB SPL / OdBFS @ 1 kHz
Sensitivity microphone (detachable)	-20 dBFS/Pa @1 kHz (boom-arm) -20 dBFS/Pa @1 kHz (ear cup)
Total harmonic distortion (THD)	< 0,35 % / OdBFS @ 1 kHz
Microphone type	Bi-Directional ECM
Microphone pick-up pattern	Bidirectional

Bluetooth

Bluetooth	version 5.2 / class 1
Range	up to 15 m / 49.2 ft
Transmission frequency	2402 MHz to 2480 MHz

GSA H3PRO dongle

Dimensions (W x H x D)	22 x 15 x 5 mm / 0.87 x 0.59 x 0.20 in
Weight	2.5 g / 0.09 oz / 0.006 lbs
Connector	USB-A plug
Range	up to 10 m / 32.8 ft
Transmission frequency	2.4 G
Bluetooth	version 4.2 / class 1
Output power	max. 8 dBm (EIRP)

Headset | Dongle

Temperature range	0 °C to +40 °C / +32 °F to +104 °F
Relative humidity	35~75%

Trademarks

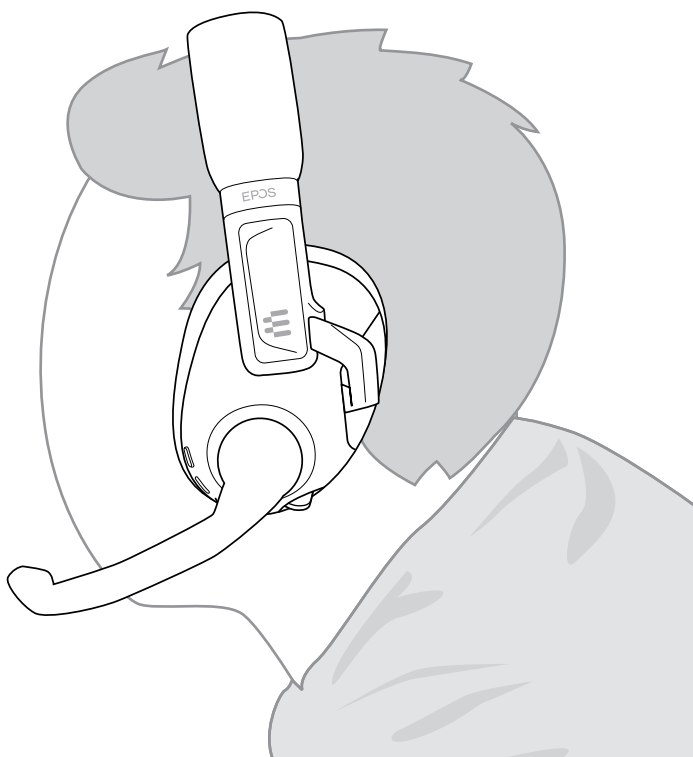
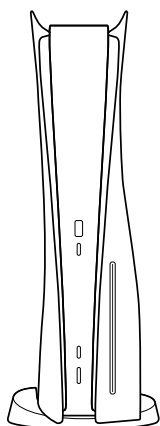
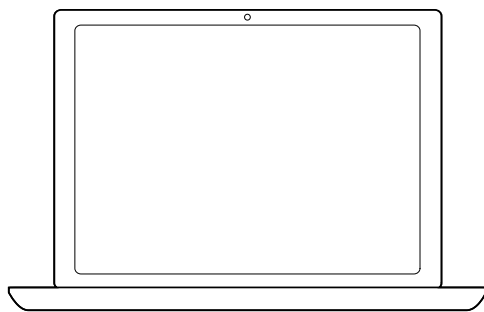
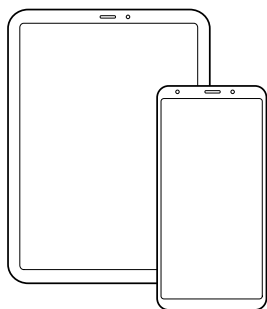
The Bluetooth® word mark and logos are registered trademarks owned by Bluetooth SIG, Inc. and any use of such marks by DSEA A/S is under license.

USB Type-C® and USB-C® are trademarks of USB Implementers Forum.

“PlayStation®” is a registered trademark or trademark of Sony Interactive Entertainment Inc. also “PS5™”/“PS4™” is a trademark of the same company.

All other trademarks are the property of their respective owners.

EPOS



DSEA A/S

Kongebakken 9, DK-2765 Smørum, Denmark

www.eposaudio.com